

SEABOARD SEABOARD

AIR LINE AIR LINE
RAILROAD RAILROAD

TIME
TABLES



Route of the
STREAMLINERS

TIME
TABLES



Route of the
STREAMLINERS



EFFECTIVE DECEMBER 11, 1952 EFFECTIVE DECEMBER 11, 1952



Once again it's *Orange Blossom Time*

THE ORANGE BLOSSOM SPECIAL heralds the start of another gala winter Season at your favorite Florida resort. This all-Pullman, attractively styled train has long been a favorite with discriminating travelers, its name a symbol of gracious traveling.

While the larger types of private rooms are featured on the ORANGE BLOSSOM, a wide variety of Pullman accommodations are to be found throughout its hospitable interiors. Ample provisions for relaxation and recreation are available in spacious lounges. Dining car meals are prepared with your fullest enjoyment in mind . . . and always you are surrounded by the attentive but unobtrusive service for which Seaboard is famous. In short . . . A train you will remember with pleasure, and one you will wish to use again and again.

To insure your obtaining the accommodations you desire, we suggest making your ORANGE BLOSSOM reservations as far in advance as possible.



THE ROUTE OF *Courteous Service*

Welcome to Florida

SO MUCH TO ENJOY IN THE SOUTH! . . . So many places to see. Along the lower eastern coastline of Florida, for example, are the fabulous "holiday cities," where carefree days merge into gay evenings of smart entertainment — a festive atmosphere for whatever pace you set. Or perhaps you long to hunt the Big Ones that lurk in the blue waters of the Atlantic and Gulf. Sports, leisure and informality are the attractions of Florida's West Coast, and of the State's central region also, with its wonderland of lakes and streams.

The Carolinas and Georgia contain delightful vacation regions, too, where the accent is on golf, tennis, riding. The Pinehurst-Southern Pines area, in North Carolina's Land of the Long-Leaf Pine, South Carolina's central sports region and the romantic Georgia Coast resort group of Savannah-Brunswick-Sea Island, all have their thousands of loyal devotees.

This much is certain: Whatever you seek from your Southern winter vacation, wherever your holiday takes you, Seaboard will add much to the pleasure of your going and coming with modern rail transportation and courteous service.

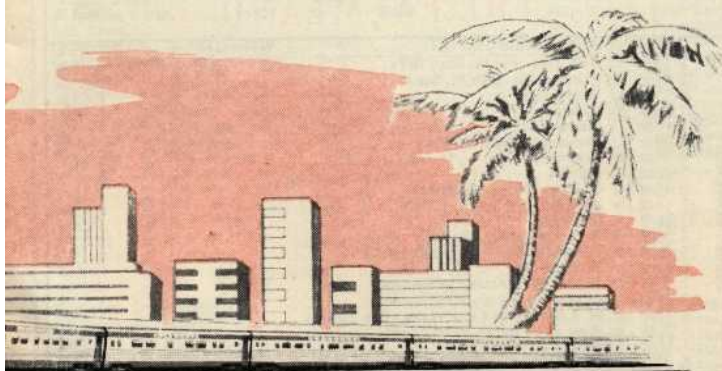


S E A B O A R D

Florida and the South!

HAPPY TRAVELING! By Seaboard, of course. To benefit most from your Southern winter vacation, your travel hours too should be spent in relaxation, comfort and freedom from care. There are the pleasant hours you enjoy when you select any of Seaboard's fine trains. Stormy weather or sunny, it makes no difference when you use dependable railroad transportation. And you arrive at your favorite resort refreshed, relaxed, and in a true holiday mood.

If you choose Pullman accommodations, Seaboard trains offer a wide selection of facilities, from berths to spacious drawing rooms. Or perhaps you'll go by coach — a modern, stainless steel Seaboard coach with restful reclining seats reserved in advance. Either way, Seaboard sees to it that you receive full travel value for your dollar. You have plenty of freedom to roam, a tavern-observation car or other lounge space which multiply your own accommodations many times over. Mealtime means an invitation to an attractive dining car where food and service combine to accent your pleasant journey. Throughout your trip, you find attentive, cheerful train personnel maintaining Seaboard's tradition as "The Route of Courteous Service."



RAILROAD



THROUGH TRAIN SCHEDULES

Between New York, Washington, Virginia, the Carolinas, Georgia, Alabama, and Florida

SILVER METEOR

		NYNH&H		Ar		3:45PM	
	8:30AM	Lv	Boston (South Sta.) (ET)			d10:25AM	
d	2:25PM	Lv	New York (Penna. Sta.) (ET)	PRR	Ar	d 8:45AM	
d	4:09PM	Lv	Philadelphia (30th St. Sta.)	"	Ar	d 8:13AM	
d	4:40PM	Lv	Wilmington	"	Ar	d 7:11AM	
d	5:42PM	Lv	Baltimore	RF&P	Ar	d 6:10AM	
d	6:45PM	Lv	Washington	SAL	Ar	d 3:30AM	
g	9:18PM	Lv	Richmond (Main St. Sta.)	"	Ar	g 2:58AM	
g	9:45PM	Lv	Petersburg	"	Ar	g 12:35AM	
g	11:56PM	Lv	Raleigh	"	Lv	g 8:45PM	
H	6:35AM	Ar	Columbia	"	Lv	H 6:23PM	
H	6:20AM	Ar	Savannah (Union Station)	"	Lv	H 5:10PM	
H	6:29AM	Ar	Thalman (Brunswick-Sea Island)	"	Lv	H 4:00PM	
H	5:00AM	Ar	Jacksonville	"	Lv	H 2:48PM	
H	5:11AM	Ar	Waldo (Gainesville)	"	Lv	H 1:40PM	
H	1:05AM	Ar	Wildwood (Homosassa Springs)	"	Lv	H 12:27PM	
H	12:12PM	Ar	Winter Haven (Cypress Gardens)	"	Lv	H 12:18PM	
H	12:22PM	Ar	W. Lake Wales-Lake Wales (Bok Tower)	"	Lv	H 11:44AM	
H	12:53PM	Ar	Sebring (Highlands Hammock State Park)	"	Lv	H 9:34AM	
H	2:28PM	Ar	West Palm Beach-Palm Beach	"	Lv	H 9:00AM	
H	3:09PM	Ar	Fort Lauderdale	"	Lv	H 11:30AM	
H	3:55PM	Ar	Miami	SAL	Lv	H 10:20AM	
H	1:00PM	Ar	Tampa	"	Lv	H 9:45AM	
H	2:15PM	Ar	Clearwater (Bellevue Biltmore Hotel)	"	Lv	H 11:05AM	
H	2:55PM	Ar	St. Petersburg	"	Lv	H 9:05AM	
H	1:45PM	Ar	Tampa	"	Lv	H 8:20AM	
H	3:45PM	Ar	Sarasota	"	Lv		
H	4:40PM	Ar	Venice	"	Lv		

SILVER COMET

		NYNH&H		Ar		6:45PM	
e11:00AM	Lv	Boston (South Sta.) (ET)	PRR	Ar	c 1:30PM		
12:30PM	Lv	New York (Penna. Sta.) (ET)	"	Ar	c11:54AM		
2:10PM	Lv	Philadelphia (30th St. Sta.)	"	Ar	c11:25AM		
2:39PM	Lv	Wilmington	"	Ar	c10:25AM		
3:45PM	Lv	Baltimore	RF&P	Ar	9:20AM		
5:00PM	Lv	Washington	SAL	Ar	6:40AM		
7:38PM	Lv	Richmond (Main St. Sta.)	"	Ar	N 6:09AM		
N 8:04PM	Lv	Petersburg	"	Ar	3:50AM		
N 10:25PM	Lv	Raleigh	"	Lv	2:10AM		
N 12:10AM	Ar	Hamlet	"	Lv	V12:40PM		
V 4:10PM	Lv	Norfolk	Ferry SAL	Ar	V12:25PM		
V 4:30PM	Lv	Portsmouth	"	Ar	V 9:00AM		
V 8:11PM	Lv	Norlina	"	Ar	V 8:31AM		
V 8:29PM	Lv	Henderson	"	Ar	V 7:35AM		
V 9:25PM	Lv	Raleigh	"	Lv	V 6:47AM		
V10:13PM	Lv	Sanford	"	Lv	V 6:17AM		
V10:43PM	Lv	Southern Pines (Pinehurst)	"	Lv	V 5:45AM		
V11:20PM	Ar	Hamlet	"	Ar	1:55AM		
12:30AM	Lv	Hamlet	"	Ar	V12:50AM		
1:40AM	Ar	Monroe	"	Lv	n10:30PM		
n 4:03AM	Ar	Greenwood	"	Lv	8:48PM		
5:45AM	Ar	Athens	"	Lv	n 7:37PM		
n 6:52AM	Ar	Emory University	"	Lv	7:10PM		
7:15AM	Ar	Atlanta	"	Ar	6:50PM		
7:40AM	Ar	Atlanta	"	Lv	h 5:37PM		
h 8:58AM	Ar	Rockmart	"	Lv	h 5:21PM		
h 9:15AM	Ar	Cedartown (ET)	"	Lv	2:00PM		
10:45AM	Ar	Birmingham (CT)	"	Lv			

ORANGE BLOSSOM SPECIAL

		NYNH&H		Ar		6:45PM	
	8:30AM	Lv	Boston (South Sta.) (ET)	PRR	Ar	d12:45PM	
d	1:35PM	Lv	New York (Penna. Sta.) (ET)	"	Ar	d11:03AM	
d	3:13PM	Lv	Philadelphia (30th St. Sta.)	"	Ar	d10:34AM	
d	4:43PM	Lv	Wilmington	"	Ar	d 9:32AM	
d	4:45PM	Lv	Baltimore	RF&P	Ar	d 8:30AM	
d	5:50PM	Lv	Washington	SAL	Ar	M 5:50AM	
d	8:23PM	Lv	Richmond (Main St. Sta.)	"	Ar	M 5:17AM	
vv	11:03PM	Lv	Petersburg	"	Ar	vv 2:55AM	
vv	2:59AM	Ar	Raleigh	"	Lv	vv10:55PM	
ff	6:29AM	Ar	Columbia	"	Lv	H 8:30PM	
ff	7:50AM	Ar	West Savannah	"	Lv	H 7:16PM	
ff	10:00AM	Ar	Savannah (Union Station)	"	Lv	H 6:05PM	
ff	11:09AM	Ar	Thalman (Brunswick-Sea Island)	"	Lv	H 3:45PM	
ff	11:20AM	Ar	Jacksonville	"	Lv	H 2:30PM	
ff	11:39AM	Ar	Wildwood (Homosassa Springs)	"	Lv	H 2:21PM	
ff	11:50AM	Ar	Winter Haven (Cypress Gardens)	"	Lv	H 2:01PM	
ff	1:23PM	Ar	W. Lake Wales-Lake Wales (Bok Tower)	"	Lv	H 1:52PM	
ff	2:10PM	Ar	Sebring (Highlands Hammock State Park)	"	Lv	H 12:17PM	
ff	2:55PM	Ar	West Palm Beach-Palm Beach	"	Lv	H 11:33AM	
ff	3:40PM	Ar	Fort Lauderdale	"	Lv	H 11:00AM	
ff	4:25PM	Ar	Miami	"	Lv		

THE SUNLAND

		NYNH&H		Ar		11:25PM	
e11:00AM	Lv	Boston (South Sta.) (ET)	PRR	Ar	6:45PM		
10:30AM	Lv	New York (Penna. Sta.) (ET)	"	Ar	6:33PM		
12:00PM	Lv	Philadelphia (30th St. Sta.)	"	Ar	4:42PM		
12:50PM	Lv	Wilmington	"	Ar	3:41PM		
1:58PM	Lv	Baltimore	RF&P	Ar	2:20PM		
3:15PM	Lv	Washington	SAL	Ar	11:00AM		
6:15PM	Lv	Richmond (Main St. Sta.)	"	Ar	10:23AM		
6:45PM	Lv	Petersburg	SAL	Ar	12:25PM		
4:30PM	Lv	Portsmouth	SAL	Ar	7:35AM		
9:25PM	Lv	Raleigh	"	Lv	2:50AM		
4:55AM	Ar	Columbia	"	Lv	11:45PM		
6:15AM	Ar	Savannah (Union Station)	"	Lv	10:14PM		
7:45AM	Ar	Thalman (Brunswick-Sea Island)	"	Lv	9:00PM		
10:26AM	Ar	Jacksonville	"	Lv	5:43PM		
11:00AM	Ar	Ocala (Silver Springs)	"	Lv	6:10PM		
1:00PM	Ar	Wildwood (Homosassa Springs)	"	Lv	2:41PM		
1:20PM	Ar	Winter Haven (Cypress Gardens)	"	Lv	2:30PM		
1:43PM	Ar	W. Lake Wales-Lake Wales (Bok Tower)	"	Lv	1:50PM		
2:00PM	Ar	Avon Park	"	Lv	1:39PM		
4:17PM	Ar	Sebring (Highlands Hammock State Park)	"	Lv	11:25AM		
5:42PM	Ar	West Palm Beach-Palm Beach	"	Lv	10:17AM		
6:40PM	Ar	Fort Lauderdale	"	Lv	9:30AM		
1:30PM	Ar	Miami	SAL	Lv	2:35PM		
3:25PM	Ar	Tampa	"	Lv	w11:35AM		
3:45PM	Ar	Bradenton	"	Lv	w11:10AM		
4:40PM	Ar	Sarasota	"	Lv	w10:30AM		
4:40PM	Ar	Venice	"	Lv			

SILVER STAR

		NYNH&H		Ar		11:25PM	
e11:00PM	Lv	Boston (South Sta.) (ET)	PRR	Ar	d 6:15PM		
9:50AM	Lv	New York (Penna. Sta.) (ET)	"	Ar	d 4:24PM		
11:33AM	Lv	Philadelphia (30th St. Sta.)	"	Ar	d 3:53PM		
12:04PM	Lv	Wilmington	"	Ar	d 2:51PM		
1:05PM	Lv	Baltimore	RF&P	Ar	d 1:50PM		
2:10PM	Lv	Washington	SAL	Ar	11:10AM		
4:43PM	Lv	Richmond (Main St. Sta.)	"	Ar	g10:25AM		
5:10PM	Lv	Petersburg	"	Ar	g 8:05AM		
7:20PM	Lv	Raleigh	"	Lv	4:10AM		
11:20PM	Lv	Columbia	"	Lv	1:35AM		
L 1:45AM	Ar	West Savannah	"	Lv	H12:16AM		
H 2:50AM	Ar	Savannah (Union Station)	"	Lv	U 9:46PM		
U 5:28AM	Ar	Thalman (Brunswick-Sea Island)	"	Lv	U 9:20PM		
5:55AM	Ar	Ocala (Silver Springs)	"	Lv	M 8:05PM		
7:05AM	Ar	Wildwood (Homosassa Springs)	"	Lv	M 7:58PM		
7:16AM	Ar	Winter Haven (Cypress Gardens)	"	Lv	M 7:36PM		
7:37AM	Ar	W. Lake Wales-Lake Wales (Bok Tower)	"	Lv	M 7:27PM		
7:47AM	Ar	Avon Park	"	Lv	M 6:00PM		
7:47AM	Ar	Sebring (Highlands Hammock State Park)	"	Lv	M 5:15PM		
9:23AM	Ar	West Palm Beach-Palm Beach	"	Lv	M 4:40PM		
11:01AM	Ar	Fort Lauderdale	"	Lv	7:15PM		
10:55AM	Ar	Miami	SAL	Lv	6:05PM		
8:00AM	Ar	Tampa	"	Lv	5:30PM		
9:07AM	Ar	Clearwater (Bellevue Biltmore Hotel)	"	Lv	w 2:50PM		
9:45AM	Ar	St. Petersburg	"	Lv	w 2:30PM		
w10:10AM	Ar	Bradenton	SAL	Lv	w 1:50PM		
w10:30AM	Ar	Sarasota	"	Lv	3:10PM		
w11:10AM	Ar	Venice	"	Lv			
w11:45AM	Ar	Boca Grande	SAL	Lv			

THE PALMLAND

		NYNH&H		Ar		11:25PM	
3:00PM	Lv	Boston (South Sta.) (ET)	PRR	Ar	9:20AM		
8:30PM	Lv	New York (Penna. Sta.) (ET)	"	Ar	7:30AM		
10:06PM	Lv	Philadelphia (30th St. Sta.)	"	Ar	6:55AM		
10:39PM	Lv	Wilmington	"	Ar	5:50AM		
11:44PM	Lv	Baltimore	RF&P	Ar	v 4:00AM		
1:10AM	Lv	Washington	SAL	Ar	12:45AM		
4:05AM	Lv	Richmond (Main St. Sta.)	"	Ar	11:51PM		
4:36AM	Lv	Petersburg	"	Ar	8:45PM		
7:30AM	Lv	Raleigh	"	Lv	7:17PM		
8:48AM	Ar	Southern Pines (Pinehurst)	"	Lv	4:13PM		
11:50AM	Ar	Camden	"	Lv	3:30PM		
12:50PM	Ar	Columbia	"	Lv	12:01PM		
4:50PM	Ar	Savannah (Union Station)	"	Lv	x10:15AM		
6:35PM	Ar	Thalman (Brunswick-Sea Island)	"	Lv	8:45AM		
8:35PM	Ar	Jacksonville	"	Lv	3:35AM		
1:30AM	Ar	Wildwood (Homosassa Springs)	"	Lv	1:50AM		
3:07AM	Ar	Winter Haven (Cypress Gardens)	"	Lv	1:40AM		
3:30AM	Ar	W. Lake Wales-Lake Wales (Bok Tower)	"	Lv	10:58PM		
6:05AM	Ar	West Palm Beach-Palm Beach	"	Lv	9:47PM		
7:18AM	Ar	Fort Lauderdale	"	Lv	9:00PM		
8:30AM	Ar	Miami	SAL	Ar	7:30AM		
10:00PM	Lv	Jacksonville	"	Ar	\$10:30PM		
v 4:45AM	Ar	Tampa	TTT BUS	Lv	w 8:05PM		
w 8:35AM	Ar	Sarasota	"	Lv	w 7:15PM		
w 9:15AM	Ar	Venice	"	Lv	3:10PM		
11:45AM	Ar	Boca Grande	SAL	Lv			

For Seaboard's Cross State Florida Service, See Table 7, Page 23;
 Jacksonville - Pensacola - New Orleans Service, Table 8, Page 23;
 Local Service to Atlanta and Birmingham, Table 11, Pages 32-33.
 Explanation of Characters, Pages 41-42—Equipment, Pages 9-10. Details Showing
 Additional Stops, Pages 15-34. Index to Time Tables and Other Services, Pages 11-14

PASSENGER CARRYING EQUIPMENT OF THROUGH MAIN LINE AND LOCAL TRAINS

SILVER METEOR

Nos. 57-157 and 158-58

(Coach Seats Reserved)

	Designation		Line No.	
	S.B.	N.B.		
Baggage Dormitory				New York-Miami.
Coach (52 Recl. Seats)	11-E	11-E		New York-Miami.
10 Rmte., 6 Dbr.	S-101	B-50	6915	New York-Miami.
10 Rmte., 6 Dbr.	S-102	B-51	6900	New York-Miami.
10 Rmte., 6 Dbr.	S-103	B-52	6913	New York-Miami.
6 Dbr., Buff. Lge.	S-104	B-53	6907	New York-Miami.
Reclining Seat P & B Car				Wildwood-St. Petersburg.
10 Rmte., 6 Dbr.	S-105	B-48	6901	New York-Sarasota-Venice.
10 Rmte., 6 Dbr.	S-106	B-58	6902	New York-St. Petersburg.
10 Rmte., 6 Dbr.	S-107	B-59	6914	New York-St. Petersburg.
SAL Diner				New York-St. Petersburg.
Coach (52 Recl. Seats)	18-W	18-W		New York-St. Petersburg.
Coach (52 Recl. Seats)	19-W	19-W		New York-St. Petersburg.
SAL Diner				New York-Miami.
Coach (52 Recl. Seats)	12-E	12-E		New York-Miami.
Coach (52 Recl. Seats)	13-E	13-E		New York-Miami.
Coach (52 Recl. Seats)	14-E	14-E		New York-Miami.
Tavern Observation				New York-Miami.

SILVER COMET

Nos. 33 and 34

(Coach Seats Reserved)

	Designation		Line No.	
	S.B.	N.B.		
P&B Dormitory (14 Recl. Seats)	21-B	21-B		Washington-Birmingham.
Coach (52 Recl. Seats)	22-B	22-B		New York-Birmingham.
Coach (52 Recl. Seats)	28-B	28-B		(SEE NOTE) Portsmouth-Atlanta.
10 Sec., 1 Dr., 2 Cpt.	B-3	B-4	8777	(SEE NOTE) Portsmouth-Atlanta.
8 Sec., 5 Dbr.	R-365	B-70	6767	Washington-Atlanta.
10 Rmte., 6 Dbr.	R-366	B-71	6912	Washington-Birmingham.
10 Rmte., 6 Dbr.	S-119	B-72	6903	New York-Birmingham.
10 Sec., Lounge	S-120	B-74	6773	New York-Birmingham.
SAL Diner				New York-Birmingham.
Coach (52 Recl. Seats)	23-B	23-B		New York-Birmingham.
Coach (52 Recl. Seats)	24-B	24-B		New York-Birmingham.
Coach (36 Recl. Seats)	25-B	25-B		New York-Birmingham.

(S.B. Dec. 13—Jan. 4 Inc.; N.B. Dec. 13—Jan. 2 Inc.)

Tavern Observation

NOTE—Handled on Trains 7 and 8 between Norlina and Hamlet.

ORANGE BLOSSOM SPECIAL

Nos. 45 and 46

(All Pullman)

	Designation		Line No.	
	S.B.	N.B.		
Baggage Dormitory				New York-Miami.
6 Sec., 6 Dbr.	OB-20	B-20	6764	New York-Miami.
12 Rmte., 1 Sbr., 4 Dbr.	OB-21	B-21	6718	New York-Miami.
SAL Diner				New York-Miami.
2 Cpt., 1 Dr., Buff. Lge.	OB-22	B-22	6717	New York-Miami.
6 Cpt., 3 Dr.	OB-23	B-23	6761	New York-Miami.
6 Cpt., 3 Dr.	OB-24	B-24	6719	New York-Miami.
6 Cpt., 3 Dr.	OB-25	B-25	6720	New York-Miami.
6 Cpt., 3 Dr.	OB-26	B-26	6721	New York-Miami.
6 Cpt., 3 Dr.	OB-27	B-27	6722	New York-Miami.
SAL Diner				Washington-Miami.
3 Cpt., 1 Dr., Buffet Lge.	R-361	B-30	6714	Washington-Miami.
8 Sec., 1 Dr., 3 Dbr.	R-362	B-31	6763	Washington-Miami.
6 Cpt., 3 Dr.	MS-7	B-28	6762	Boston-Miami.
6 Sec., 4 Rmte., 4 Dbr.	MS-8	B-29	2762	Boston-Miami.

SILVER STAR

No. 21-121 and 122-22

(Coach Seats Reserved)

	Designation		Line No.	
	S.B.	N.B.		
Baggage Dormitory				New York-Miami.
10 Rmte., 6 Dbr.	S-109	B-44	6905	New York-Miami.
8 Sec., 5 Dbr.	S-110	B-45	2700	New York-Miami.
6 Cpt., Buff. Lounge	S-111	B-47	6779	New York-Miami.
6 Cpt., 3 Dr.	S-112	B-55	2761	New York-Miami.
8 Sec., 5 Dbr.	S-113	B-56	2767	New York-Miami.
10 Rmte., 6 Dbr.	S-114	B-57	6908	New York-Miami.
SAL Diner				New York-Miami.
Coach (52 Recl. Seats)	7-W	7-W		New York-St. Petersburg.
Coach (52 Recl. Seats)	8-W	8-W		New York-St. Petersburg.
SAL Diner				New York-Miami.
Tav. Coach (24 Recl. Seats)	2-E	2-E		New York-Miami.
Coach (36 Recl. Seats)	3-E	3-E		New York-Miami.
Coach (52 Recl. Seats)	4-E	4-E		New York-Miami.
Coach (52 Recl. Seats)	5-E	5-E		New York-Miami.
Obv. Coach (40 Recl. Seats)	6-E	6-E		New York-Miami.

GULF WIND

Nos. 38 and 39

Designation
W.B. E.B. Line No.

Passenger and Baggage Car				Jacksonville-Flomaton.
Reclining Seat Coach				Jacksonville-New Orleans.
6 Sec., 8 Dbr.	B-1	L-12	3241	Jacksonville-New Orleans.
10 Sec., Buff. Lounge	B-2	L-11	3227	Jacksonville-New Orleans.
6 Sec., 4 Rmte., 4 Dbr.	B-5	L-10	3242	Jacksonville-New Orleans.
L&N Dining Car				New Orleans to Mobile.
SAL Dining Car				Jacksonville-Tallahassee.

THE SUNLAND

Nos. 7-107 and 108-8

Designation
S.B. N.B. Line No.

Baggage Car				Washington-Miami.
Coaches (two)				Washington-Miami.
Coach				Washington-Tampa.
Passenger and Baggage Car				Jacksonville-Tampa.
Coach				Tampa-Sarasota-Venice.
Dining Car				Washington-Hamlet.
Dining Car				Portsmouth-Norlina.
SAL Parlor-Diner				Jacksonville-Wildwood.
10 Sec., 1 Dr., 2 Cpt.	R-360	B-110	2722	Washington-Jacksonville.
10 Sec., 1 Dr., 2 Cpt.	B-17	B-18	6702	Portsmouth-Tampa.
Coach (52 Recl. Seats)	28-B	28-B		(SEE NOTE) Portsmouth-Atlanta.
10 Sec., 1 Dr., 2 Cpt.	B-3	B-4	6777	(SEE NOTE) Portsmouth-Atlanta.

NOTE—Handled on Trains 33 and 34 between Hamlet and Atlanta.

THE PALMLAND

Nos. 9-1 and 2-10

Designation
S.B. N.B. Line No.

Baggage Car				Washington to Miami; Miami to New York.
Coaches (two)				New York-Miami.
Coach				Tampa-Miami.
Passenger and Baggage Car				Jacksonville-Tampa.
Coach				New York-Tampa.
SAL Parlor Dining Car				Tampa-Port Boca Grande.
Coach				Tampa-Port Boca Grande.
Dining Car				Washington to New York.
SAL Dining Car				Raleigh-Jacksonville.
12 Rmte., 1 Sbr., 4 Dbr.	S-116	B-64	2713	New York-Hamlet.
8 Sec., 1 Dr., 3 Dbr.	S-117	B-63	2707	New York-Hamlet.
10 Sec., 1 Dr., 2 Cpt.	R-350	B-91	2703	Washington-Hamlet.
10 Sec., 1 Dr., 2 Cpt.	4332	B-123	2223	Cleveland-Jacksonville-Tampa.
10 Sec., 1 Dr., 2 Cpt.	S-115	B-122	2701	New York-Miami.
10 Sec., 1 Dr., 2 Cpt.	CS-2	CS-2	6700	Tampa-Miami.

THE COTTON BLOSSOM

Nos. 5 and 6

Passenger and Baggage Car				Washington-Birmingham.
Coach				Washington-Birmingham.

PASSENGER, MAIL AND EXPRESS

Nos. 3-11 and 12-4

Passenger and Baggage Car				Washington-Hamlet.
Passenger and Baggage Car				Hamlet-Atlanta.
Coach				Washington-Hamlet.
Coach				Hamlet-Atlanta.

PASSENGER, MAIL AND EXPRESS—Nos. 36-37

Baggage Car				Jacksonville-Flomaton.
Coaches				Jacksonville-Flomaton.

No. 2

Passenger and Baggage Car				Jacksonville to Hamlet
Coach				Jacksonville to Hamlet

LINE RAILROAD STATIONS AND OTHERS IN THIS TIMETABLE

Table No.	Table No.	Table No.	Table No.	Table No.	Table No.	Table No.	Table No.												
<p>Gainesville, Fla. .9 *Gavalon, S. C.2 *Garnett, S. C.2 *Garysburg, N. C. .11 *Gasparilla, Fla.5 *Gaston, S. C.2 *Georgetown, S. C. .13 *Gibson, Fla.2 *Gibson, N. C.2 *Gifford, S. C.2 *Glen St. Mary, Fla. .8 *Glenwood, Ga.2 *Gloster, Ga.11 *Golden Rod, Fla.2 *Govan, S. C.2 *Graves, S. C.2 *Great Falls, S. C.2 *Green Pond, N. C.2 *Greenview, Fla.8 *Greenwood, S. C. . . .11 *Gresham, S. C.2 *Greystone, N. C. . . .1 *Gross, Fla.2 *Groveland, Ga.2 *Gulf Pine, Fla.2 *Gulport, Fla.2 *Gumberry, N. C. . . .11 *Gum Springs, N. C. . . .2</p>	<p>Indianapolis, Ind. .17 *Indian Beach Jct., Fla.2 *Indian Trail, N. C. . . .3 *Inness, S. C.2 *Iron, N. C.2 *Irontdale, Ala.2 *Island Grove, Fla. . . .2</p> <p>Jacksonville, Fla. . . .2, 3, 4, 8, 9, 17, 18 *Jamestown, S. C. . . .13 *Jamieson, Fla.2 *Jasper, S. C.2 *Jeffersonville, Ga. . . .2 *Jersey City, N. J. . .16 *Johnsonville, S. C. . . .2 *Jones, Ga.2</p>	<p>Kansas City, Mo.18 *Katesville, N. C. . . .2 *Kelford, N. C.2 *Kent, S. C.2 *Key West, Fla. 3, 7, 10 *Kibbee, Ga.2 *Kilby, Ala.2 *Kilby, Va.2 *Kimberly, S. C.2 *Kimbrough, Ga.2 *Kingsland, Ga.2 *Kittredge, S. C.1 *Kittrell, N. C.1 *Knights, Fla.4 *Knowles, S. C.2 *Koonce, S. C.2 *Kramer, Ga.2</p>	<p>Laconochee, Fla. . . .4 *La Crosse, Va.1 *Ladds, Ga.2 *Lainkat, Ga.2 *Lake Carroll, Fla. . . .2 *Lake Charm, Fla. . . .2 *Lake City, Fla.2, 8 *Lake Garfield, Fla. . . .2 *Lake Jam, Fla.2 *Lake Wales, Fla.1 (See West Lake Wales) *Lake Worth, Fla. 3, 7 *Landsford, S. C.2 *Lanier, Ga.2 *Largo, Fla.4 *Lattimore, N. C.6 *Laurel, Fla.6 *Laurel Hill, N. C. . . .11 *Laurinburg, N. C. . .12 *Lawndale Jct., N. C.2 *Lawrenceville, Ga.11 *Lawtey, Fla.3, 4 *Lee, Fla.8 *Leeds, S. C.11 *Leesburg, Fla.9 *Leland, S. C.2 *Leslie, Ga.2 *Levy, S. C.2 *Lewiston, N. C.2 *Lilburn, Ga.11 *Lilleville, N. C. . . .11 *Lima, O.17 *Limehouse, S. C. . . .2 *Limestone, Fla.5</p>	<p>Minturn, S. C.4 *Mitchers Siding, N. C.2 *Mitylene, Ala.2 *Mobile, Ala.8, 18 *Modello Park, Fla. . . .2 *Moncure, N. C.1 *Monroe, N. C. . . .11, 12 *Montclair, Fla.2 *Montgomery, Ala. . .18 *Monticello, Fla.2 *Montreal, Can. . . .18 *Montrose, Ga.2 *Lofton, Fla.2 *Lorida, Fla.2 *Los Angeles, Cal. 8, 18 *Louisburg, N. C.2 *Louisville, Ky.17 *Louvale, Ga.2 *Lowe, N. C.2 *Lugoff, S. C.2 *Lumberton, N. C. . . .2 *Lumpkin, Ga.15 *Lunn, S. C.2 *Luray, S. C.2 *Lutz, Fla.2 *Luxomni, Ga.11 *Lydia, S. C.2 *Lynch, S. C.2 *Lynchburg, Va. . . .17 *Lynn, Ga.14 *Lyons, Ga.2</p>	<p>Nassau, Bahamas *Navassa, N. C.3-A *Neals, Fla.2 *Neeses, S. C.2 *Nesmith, S. C.2 *Neuse, N. C.1 *Newark, N. J.1, 11, 18 *New Haven, Conn. . . .1, 16, 17, 18 *New Hill, N. C.1 *New London, Conn.16 *New Orleans, La. . . .2, 8, 18 *New Point, Ga.2 *Newport News, Va. 17 *Newsoms, Va.11 *New York, N. Y. . . .1, 11, 16, 17, 18 *Nichols, Fla.2 *Nocatee, Fla.6 *Nokomis, Fla.6 *Norfolk, Va. 1, 11, 17 *Norlina, N. C. . . .1, 11 *North, S. C.2 *North Charleston, S. C.2 *North Philadelphia, Pa. . . .1, 11, 16, 18 *North Side, N. C. . . .2 *North West, N. C. . . .2 *Norway, S. C.2</p>	<p>Ocala, Fla. 3, 4, 9 *Oceda, S. C.2 *Ochwalkee, Ga.2 *Ocella, Fla.2 *Ocoee, Fla.2 *Odenville, Ala. . . .11 *Oglesby, Ga.11 *Ohatsee, Ala.11 *Ohoospee, Ga.2 *Okeechobee, Fla. . . .3 *Oklahoma City, Okla.18 *Olar, S. C.2 *Old Hundred, N. C. . .2 *Old Point Comfort, Va.17</p>	<p>Oldsmar, Fla.4, 7 *Olean, N. Y.17 *Olin, S. C.2 *Olustee, Fla.2 *Omaha, Ga.2 *Ona, Fla.2 *Oneco, Fla.6 *O'Neil, Fla.2 *Opa Locka, Fla. . . .3 *Orange Heights, Fla. . . .3, 4 *Orland, Ga.2 *Orlando, Fla.9 *Osborne, N. C. . . .2 *Osprey, Fla.6 *Otis, Fla.2 *Ottawa, Can.18 *Ovidio, Fla.2 *Oxford, Fla.3, 4 *Oxford, N. C.2</p>	<p>Palestine, Ala.2 *Palm Beach, Fla.2 (See W. P. Beach) *Palmetto, Fla.9 (Also see Palmetto-Ellenton) *Palmetto-Ellenton, Fla.6 *Pamplico, S. C.2 *Panasofkee, Fla.2 *Parkersburg, W. Va.17 *Parrish, Fla.6 *Parrishville, S. C. . . .2 *Parsons, Ala.11 *Pasadena, Fla.2 *Paschall, N. C.1 *Patrick, S. C.2 *Peachland, N. C. . . .11 *Pee Dee, N. C.11 *Pembroke, Ga.2 *Pembroke, N. C. . . .12 *Pendleton, N. C.2 *Penia, Ga.2 *Pensacola, Fla. 2, 8, 18 *Perrot, S. C.2 *Petersburg, Va.1, 11, 17 *Philadelphia, Pa. . . .1, 11, 16, 17, 18 *Phoenix, Ariz.8 *Piedmont, Ala.11 *Pine Bluff, Ark.2 *Pine Bluff, N. C. . . .2 *Pinehurst, N. C. 1, 11 *Pirates Cove, Fla. . .10 *Pitts, Ga.2 *Pittsboro, N. C. . . .17 *Pittsburgh, Pa. . . .17 *Pittsview, Ala.2 *Placida, Fla.2 *Plains, Ga.2 *Plant City, Fla. . . .4, 7 *Platt, Fla.2 *Plattsburg, N. Y. . .18 *Plymouth, Fla.9 *Polk City, Fla.3 *Polkton, N. C.11 *Pompano Beach, Fla. . .2 *Pontiac, S. C.2 @Port Boca Grande, Fla.5 *Porterville, N. C. . . .2 *Portland, Me.18 *Portsmouth, Va.1, 11 *Poston, S. C.13 *Potocasi, N. C.2 *Powder Springs, Ga.2 *Poynor, S. C.2 *Preston, Ga.2</p>	<p>Pritchard, S. C. . . .13 *Providence, R. I. . . .1, 16, 18 *Punta Rasa Jct., Fla.2 *Purvis, Va.11</p> <p>Quantic, Va.1, 11; 17 *Quebec, Can.8 *Quincy, Fla.18</p>	<p>Ragland, Ala.11 *Rains, S. C.2 *Raleigh, N. C. . . .1, 11 *Rama, N. C.2 *Randall, Ga.2 *Rawlings, Va.1 *Red Banks, N. C.2 *Redington Beach, Fla.4, 7 *Redwood, N. C.2 *Reka, Ga.2 *Renno, S. C.11 *Rhine, Ga.2 *Riceboro, Ga.2 *Richland, Ga.15 *Richmond, Va.1, 11, 17, 18 *Richmond Hill, Ga. . . .2 *Rich Square, N. C. . . .2 *Ridgeway, N. C.1 *Riunon, Ga.2 *Roanoke, Va.17 *Roanoke Rapids, N. C.11 *Roba, Ala.2 *Roberdell, N. C.2 *Rochester, Ga.2 *Rochester, N. Y. . . .17 *Rockingham, N. C. . . .11, 12 *Rockledge, Ga.2 *Rockmart, Ga.11 *Rodman, S. C.2 *Rosindale, N. C.2 *Rowena, Ga.2 *Roxobel, N. C.2 *Russell, Ga.11 *Russellville, N. C. . . .2 *Rutherford, Ala.2 *Rutherfordton, N. C. . . .12 *Rutland, Vt.18</p>	<p>Safety Harbor, Fla.4 *St. Albans, Vt.8 *St. Augustine, Fla. 17 *St. Catherine, Fla. . . .2 *St. Johns, Can.18 *St. Louis, Mo. 17, 18 *St. Petersburg, Fla. . . .4, 7, 18 *Sampson City, Fla. . . .2 *San Antonio, Texas.8, 18 *Sanderson, Fla.8 *San Diego, Cal.8 *Sanford, N. C. . . .1, 11 *San Francisco, Cal. 8 *Sanie, Ala.11 *Santos, Fla.3, 4 *Sarasota, Fla.6, 9, 18 *Saratoga Springs, N. Y.18 *Savannah, Ga.1, 2, 13, 15 *Schofield, S. C.2 *Scholl, N. C.2 *Scotia, S. C.2 *Seaboard, N. C. . . .11</p>	<p>Sea Island, Ga.2 *Seals, Ga.2 *Sebring, Fla.3, 7 *Segars, S. C.2 *Severn, N. C.2 *Seville, Ga.2 *Shelby, N. C.12 *Shepard, S. C.2 *Sherman, Fla.2 *Silver Springs, Fla.3, 4 *Smithboro, S. C.2 *Smithsonia, Ga.2 *Soperton, Ga.2 *Southern Pines, N. C.1, 11 *Sparr, Fla.3, 4 *Spindale, N. C.2 *Springdale, Mass. . . .16; 17 *Stamford, Conn. . . .18 *Stanley, N. C.2 *Starke, Fla.3, 4 *Statham, Ga.11 *Steeles Mill, N. C. . .11 *Stilesboro, Ga.2 *Stillwell, Ga.2 *Srono, S. C.2 *Stouts, N. C.2 *Stubbs, N. C.2 *Stuckey, Ga.2 *Suffolk, Va.1, 11, 17 *Sulphur Springs, Fla.4 *Summerfield, Fla. . . .3 *Summit, N. C.2 *Sumter, S. C.2 *Sumterville, Fla.2 *Sunbury, Pa.17 *Swansea, S. C.2 *Sycamore, S. C.2 *Sydney, Fla.4</p>	<p>Tallahassee, Fla.2, 8, 14 *Tallahavast, Fla. . . .6 *Tampa, Fla.4, 5, 6, 7, 9 *Tarpon Jct., Fla.2 *Tar River, N. C.2 *Tarrytown, Ga.9 *Tavares, Fla.9 *Tavernier, Fla. . . .10 *Taylorsville, Ga.2 *Terre Haute, Ind. 17 *Texarkana, Ark. . . .18 *Thelmann, Ga.2, 18 *Thelma, N. C.2 *Thrift, N. C.2 *Tisonia, Fla.2 *Toledo, O.17 *Towensend, Conn. . . .2 *Trenton, N. J.1, 11, 16</p>	<p>Trutman, Ga.2 *Troy, N. Y.2 *Tucker, Ga.11 *Tucson, Ariz.8 *Tupelo, Miss.11 *Turkey Creek, Fla. 4 *Turman, Ga.18 *Tuscaloosa, Ala. . . .18</p>	<p>Unicors, S. C.2 *Union, Ga.2 *Useppa Island, Fla.5</p>	<p>Valrico, Fla.4 *Van Wyck, S. C. . . .11 *Vass, N. C.1 *Vaughan, N. C. . . .11 *Vegetable, Fla.6 *Venice, Fla.6, 9 *Vidalia, Ga.15 *Vincent, S. C.2</p>	<p>Waco, N. C.2 *Wadesboro, N. C. . . .1, 12 *Wake Forest, N. C. . .2 *Waldo, Fla.3, 4, 9 *Wallace, S. C.2 *Walton, S. C.2 *Warfield, Va.1 *Warner, S. C.2 *Warren Plains, N. C. 11 *Warsaw, Ga.2 *Warsaw, S. C.2 *Washington, D. C. . . .1, 11, 16, 17, 18 *Watertown, Fla.2 *Watkins, N. C.2 *Watts, S. C.2 *Wattsville, Ga.11 *Waverly, Ga.2 *Waxhaw, N. C. . . .11 *Weddell, S. C.2 *Weldon, N. C. . . .11 *Wellborn, Fla.8 *Wellington, Ala. . . .11 *West Bainbridge, Ga.2 *West Frostproof, Fla.3 *West Lake Wales, Fla. . . .3, 7 *West Palm Beach, Fla. . . .3, 7, 17, 18 *West Savannah, Ga. 2 *Whitehouse, Ga.2 *White House, Fla. . . .2 *White Oak, Ga.2 *Whitmore, S. C. . . .11 *Whitney, Fla.2 *Wiggins, S. C.2 *Wildwood, Fla. . . .3, 4 *Williams, Ga.2 *Williamsport, Pa. . .17 *Williford, Fla.2 *Willman, S. C.2 *Willow, Fla.6 *Willow Creek, S. C. . .2 *Wilmington, Del. . . .1, 11, 16, 17 *Wilmington, N. C. . . .11, 12 *Wimauma, Fla.6 *Winder, Ga.11 *Wingate, N. C. . . .11 *Winter Garden, Fla. . .2 *Winter Haven, Fla.3 *Winter Park, Fla.2 *Wise, N. C.1 *Withbee, S. C. . . .13 *Womble, N. C.2 *Woodbine, Ga.2 *Woodford, S. C.2 *Woodland, N. C.2 *Worcester, Mass. . . .17</p>	<p>Ybor City, Fla.2 *Yeaman's Hall, S. C. . .2 *York, Pa.17 *Youngstown, O. . . .17 *Youngsville, N. C. . .1 *Yulee, Fla.2</p>	<p>Zellwood, Fla.9 *Zephyrhills, Fla. . . .4</p>

For explanation of characters on these two pages, see preceding page

SCHEDULES BETWEEN EASTERN CITIES AND FLORIDA THROUGH VIRGINIA, THE CAROLINAS AND GEORGIA

TABLE 1

Daily Trains—Read Up

Daily Trains—Read Down										Daily Trains—Read Up												
171 143 9 9-1	13 156 95 5	175 113 57 46 157	175 181 46 46	5 125 53 53	173 121 107 7-107	173 127 21 21-21	173 119 93 3	Miles	NYNH&H PRR RF&P SAL	172 150 94 4	12 112 110 2-10	188 114 58 158-58	176 130 96 6	174 196 34 34	174 180 46 46	170 190 22 122-22	170 108 8 108-8					
PM 3 00 3 50 3 55	Noon 12 00 12 58 3 13 4 35	AM 8 30 9 25 11 42	AM 8 30 9 25 11 42	AM 7 00 7 48 9 58 11 20	PM 11 00 12 05 2 20	PM 11 00 12 05 2 20	PM 11 00 12 05 2 20		Eastern Time	AM 8 10 7 05 4 40	PM 2 25 1 35 10 00	PM 3 45 2 53 12 33	PM 8 25 7 37 5 30	PM 6 45 5 52 3 32	PM 6 45 5 52 3 32	PM 11 25 10 35 8 28	PM 11 25 10 35 8 28					
7 20 11 15	8 30 8 45 9 29 9 57 10 06 10 39 11 44 12 25	10 30 10 45 11 33 12 04 12 20 12 40 1 10 1 29 2 00 2 28 4 4	10 30 10 45 11 33 12 04 12 20 12 40 1 10 1 29 2 00 2 28 4 4	12 30 12 45 1 31 2 01 2 10 2 39 3 03 3 33 4 03 4 33 5 03 5 33 6 03 6 33 7 03 7 33 8 03	9 50 10 05 10 50 12 04 12 20 12 40 1 10 1 29 2 00 2 28 4 4	9 50 10 05 10 50 12 04 12 20 12 40 1 10 1 29 2 00 2 28 4 4	9 50 10 05 10 50 12 04 12 20 12 40 1 10 1 29 2 00 2 28 4 4	0.0 10.0 58.1 95.9 91.7 118.1 186.5 226.6 0.0 8.2 34.7 54.1 116.5 0.0 12.9 21.7 22.7 37.3 41.6 47.4 50.0 52.4 56.9 61.0 63.7 70.0 78.7 83.0 86.2 88.4 90.8 95.0 98.2	Lv BOSTON (NYNH&H) Providence New Haven NEW YORK (Gr. Cent. Sta.) NEW YORK (Penn Station) WASHINGTON NEW YORK (PRR) Newark Trenton North Philadelphia PHILADELPHIA (30th St. Sta.) Wilmington Baltimore WASHINGTON WASHINGTON (RF&P) Alexandria, VA Quantico Fredericksburg RICHMOND (SAL) RICHMOND (Main St. Sta.) JAMES RIVER Chester APPOMATTON RIVER Petersburg Dinwiddie DeWitt McKenney NOTTAWAY RIVER Rawlins Warfield Alberta Cochran MEHERRIN RIVER LaCrosse Hagood Bracey ROANOKE RIVER Paschall Wise Norlina	1 35 1 20 12 35 12 06 11 52 11 20 10 10 9 30 8 45 8 22 7 42 7 06 5 20 4 50	9 20 9 05 8 19 7 50 7 30 6 55 5 50 5 05 4 00 3 37 2 41 1 10 12 45	d10 25 d10 10 d 8 26 d 8 55 d 8 45 d 8 11 d 6 30 d 6 10 J 5 47 J 5 15 J 4 52 J 3 30	3 05 2 50 2 00 1 32 1 23 1 20 1 11 1 00 10 00 9 37 8 35 6 55 6 15	c 1 30 c 1 14 c12 30 c12 03 c11 54 c11 25 c10 25 c 9 45 9 20 J 8 57 J 8 25 6 40 6 40	d12 45 d12 28 d11 42 d11 03 d10 34 d 8 50 d 8 30	d 6 15 d 5 05 d 4 34 d 3 53 d 2 51 d 2 10 d 1 50 d 1 27 J 1 20 M 5 50 M 5 50	d 6 15 d 5 05 d 4 34 d 3 53 d 2 51 d 2 10 d 1 50 d 1 27 J 1 20 M 5 50 M 5 50	g10 25 g10 17 g10 10 g 9 00	g10 25 g10 17 g10 10 g 9 00	g10 25 g10 17 g10 10 g 9 00	g10 25 g10 17 g10 10 g 9 00	g10 25 g10 17 g10 10 g 9 00
6 02	3 20				8 11																	
6 02	3 20				8 11																	
6 21	3 42				8 29																	
6 37	3 57				8 55																	
6 48	4 20				9 05																	
7 10	4 50				9 25																	
7 30	5 25				9 50																	
7 30	5 25				10 05																	
7 30	5 25				10 20																	
7 30	5 25				10 35																	
7 30	5 25				10 50																	
7 30	5 25				11 05																	
7 30	5 25				11 20																	
7 30	5 25				11 35																	
7 30	5 25				11 50																	
7 30	5 25				12 05																	
7 30	5 25				12 20																	
7 30	5 25				12 35																	
7 30	5 25				12 50																	
7 30	5 25				1 05																	
7 30	5 25				1 20																	
7 30	5 25				1 35																	
7 30	5 25				1 50																	
7 30	5 25				2 05																	
7 30	5 25				2 20																	
7 30	5 25				2 35																	
7 30	5 25				2 50																	
7 30	5 25				3 05																	
7 30	5 25				3 20																	
7 30	5 25				3 35																	
7 30	5 25				3 50																	
7 30	5 25				4 05																	
7 30	5 25				4 20																	
7 30	5 25				4 35																	
7 30	5 25				4 50																	
7 30	5 25				5 05																	
7 30	5 25				5 20																	
7 30	5 25				5 35																	
7 30	5 25				5 50																	
7 30	5 25				6 05																	
7 30	5 25				6 20																	
7 30	5 25				6 35																	
7 30	5 25				6 50																	
7 30	5 25				7 05																	
7 30	5 25				7 20																	
7 30	5 25				7 35																	
7 30	5 25				7 50																	
7 30	5 25				8 05																	
7 30	5 25				8 20																	
7 30	5 25				8 35																	
7 30	5 25				8 50																	
7 30	5 25				9 05																	
7 30	5 25				9 20																	
7 30	5 25				9 35																	
7 30	5 25				9 50																	
7 30	5 25				10 05																	
7 30	5 25				10 20																	
7 30	5 25				10 35																	
7 30	5 25				10 50																	
7 30	5 25				11 05																	
7 30	5 25				11 20																	
7 30	5 25				11 35																	
7 30	5 25				11 50																	
7 30	5 25				12 05																	
7 30	5 25				12 20																	
7 30	5 25				12 35																	
7 30	5 25				12 50																	
7 30	5 25				1 05																	
7 30	5 25				1 20																	
7 30	5 25				1 35																	
7 30	5 25				1 50																	
7 30	5 25				2 05																	
7 30	5 25				2 20																	
7 30	5 25				2 35																	
7 30	5 25				2 50																	
7 30	5 25				3 05																	
7 30	5 25				3 20																	
7 30	5 25				3 35																	
7 30	5 25				3 50																	
7 30	5 25				4 05																	
7 30	5 25				4 20																	
7 30	5 25				4 35																	
7 30	5 25				4 50																	
7 30	5 25				5 05																	

SCHEDULES BETWEEN EASTERN CITIES AND FLORIDA THROUGH VIRGINIA, THE CAROLINAS AND GEORGIA

(Continued)

Read Down					Miles from Richmond	TABLE 2		Read Up					
9	57-157	45	7-107	21-121		Daily Trains	Eastern Standard Time	10	2	158-58	46	108-8	122-22
AM 10 10	AM 1 58	AM vv 1 05	PM 11 45	PM 9 25	253.8	Lv Hamlet	N. C.	PM 5 55	PM 9 15	PM 10 42	AM vv 1 00	AM 5 25	AM 6 15
f10 27					260.7	Lv Osborne	S. C.		f 8 40				
					269.6	Lv Wallace							
					270.8	PEE DEE RIVER							
			x12 07		272.0	" Cheraw		5 17				4 45	
					276.9	" Kimberly							
f10 59					285.2	" Patrick			f 8 09				
11 15					300.4	" McBoe		zz 4 45	f 7 50			f 4 13	
f11 27					307.2	" Bethune			f 7 36			f 4 04	
f11 35					313.3	" Cassatt			f 7 28				
f11 43					320.0	" Shephard			f 7 20				
11 50			1 02		326.8	" Camden		4 13	f 7 10			3 35	
					328.8	WATERHEE RIVER							
f12 03					330.8	" Lugoff			f 6 56				
f12 16					339.4	" Blaney			f 6 46				
					344.4	" Pontiac			f 6 20				
12 50	3 51	2 59	1 50	11 20	359.7	Ar COLUMBIA	Lv	3 30	6 20	8 45	vv10 55	2 50	4 10
1 15	3 56	3 05	2 10	11 25	359.7	Lv COLUMBIA	Ar	3 15	5 55	8 40	vv10 50	2 30	4 05
					361.2	CONGAREE RIVER							
					361.7	" Cayce							
f 1 25					366.7	" Dixiana			f 5 41				
f 1 36					375.0	" Gaston			f 5 31				
f 1 45					380.8	" Swansea			f 5 21				
f 1 52					386.1	" Woodford			f 5 14				
2 00					389.7	" North		yy 2 22	5 08				
					390.4	NORTH EDISTO RIVER							
f 2 06					394.3	" Livingston			f 5 00				
f 2 18					395.8	" Neeses			f 4 46				
					401.7	" Norway							
					405.7	SOUTH EDISTO RIVER							
2 27			3 04		410.3	" Denmark							
f 2 45					417.6	" Govan		1 55	4 38				
					420.7	" Olar			f 4 24				
					424.2	" Schofield							
f 2 58					426.7	" Ulmers			f 4 10				
					430.8	" Sycamore							
3 15					436.4	" Fairfax			3 55				
f 3 23					443.1	" Gifford		1 15	f 3 48			f12 45	
f 3 35					446.4	" Luray							
f 3 50					450.5	" Estill		xx 1 02	3 35				
					455.6	" Scotia	S. C.						
f 4 01					460.7	" Garnett		xx12 48	f 3 19				
f 4 09					465.5	SAVANNAH RIVER							
f 4 15					469.1	" Clio	GA.		f 3 09				
					476.7	" Stillwell			f 3 00				
					482.5	" Rincon			f 2 54				
					500.6	" West Savannah							
4 50	6 20		4 55		500.6	Ar SAVANNAH	Lv	12 01	2 30	6 23	8 30	11 45	1 35
5 05	6 25		5 10		515.6	Lv SAVANNAH	Ar	11 45	2 15	6 18	8 25	11 30	1 30
					517.0	OGECHEE RIVER							
f 5 25					528.7	" Richmond Hill	Lv		f 1 43				
f 5 37					533.3	" Dorchester			f 1 30				
f 5 44					540.6	" Riceboro			f 1 23				
f 5 54					543.7	" Jones			f 1 13				
f 6 05					547.6	" Warsaw		xx10 36	f 1 05				
f 6 13					554.0	" Townsend			f12 56				
					557.1	" Cox							
					560.3	ALTAHAMA RIVER							
6 23					567.9	" Everett		xx10 25	12 48				
6 35	H 7 29	ff 6 29	6 15	H 2 50	582.3	" Thalmann (Brunswick Jct.)		x10 15	12 37	H 5 10	H 7 16	10 14	H12 16
f 6 51					586.3	" Waverly			f12 21				
f 7 01					590.1	" White Oak			f12 15				
					590.6	SATILLA RIVER							
f 7 08					602.4	" Woodbine		xx 9 48	f12 08				
					606.3	" Kingsland	GA.		11 53				
					608.9	ST. MARY'S RIVER							
					608.9	Ar Gross	FLA.	Lv					
					615.5	Lv Gross	(Via Cut-off)	Ar					
					615.5	Ar Callahan		Lv					
					615.5	Ar Baldwin		Lv					
7 42			K 7 03		627.6	Lv Gross		Ar					
rr 8 20					627.6	Ar Fernandina Beach	(SAL BUS)	Lv	M 9 21	11 34			f 9 30
rr 7 00			rr12 15		615.5	Lv Fernandina Beach	(SAL BUS)	Ar	rr12 15	rr10 55			rr 7 00
					639.6	Lv Yulee		Ar	M 9 21	11 00			f 9 30
7 42	8 50	7 50	K 7 45		639.6	Ar JACKSONVILLE		Lv	8 45	4 00	6 05	9 00	
					0.0	Lv JACKSONVILLE		Ar		9 00			6 30
					58.8	Ar Lake City		Lv		7 31			4 31
					81.0	Ar Live Oak		Lv		7 08			4 05
					109.4	Ar Madison		Lv		6 35			3 25
					165.0	Ar TALLAHASSEE		Lv		5 35			2 00
					189.0	Ar Quincy		Lv		4 53			1 17
					207.6	Ar CHATTAHOOCHEE		Lv		4 30			12 50
					368.6	Ar PE A SACOLA (CST)	(L&N)	Lv		11 39			6 30
					412.6	Ar Flomaton		Lv		10 30			4 30
					462.6	Ar Mobile		Lv		8 45			2 45
					612.6	Ar NEW ORLEANS		Lv		5 00			11 00

Characters explained on pages 41-42; Equip-ment on pages 9-10, 34

SCHEDULES BETWEEN EASTERN CITIES AND FLORIDA THROUGH VIRGINIA, THE CAROLINAS AND GEORGIA

(Continued)

Read Down					Miles from Richmond	TABLE 3		Read Up				
9	45	57	7	21		Daily Trains	Eastern Standard Time	10	58	8	22	46
PM 10 00	AM 8 00	AM 8 58	AM 8 35	AM	639.6	Lv JACKSONVILLE.....	FLA. Ar	AM 7 30	PM 3 52	PM 7 45	PM	PM 5 57
f 10 20		‡ 9 16	RS 8 55		657.9	Ar Baldwin.....	Lv	f 6 44		jj 7 11		
f 10 41			S 9 14		676.9	Ar Lawley.....		f 6 23		W 6 54		
10 58			S 9 25		683.8	" Starke.....		f 6 12		W 6 46		
f 11 08			S 9 33		690.0	" Hampton.....		f 6 00		W 6 38		
f 11 18		□ 9 51	S 9 40	U 4 48	695.4	" Waldo (Gainesville).....		f 5 50	□ 2 48	W 6 30	U 10 25	
f 11 25			S 9 46		700.7	" Orange Heights.....		f 5 38		W 6 22		
f 11 35			f 9 53		709.7	" Hawthorne.....		f 5 17		W 6 14		
f 11 53			S 10 05		722.3	" Citra.....		f 4 53		W 6 06		
f 11 58			S 10 09		727.8	" Sparr.....		f 4 40		W 5 58		
f 12 03			S 10 12		731.1	" Anthony.....		f 4 30		W 5 50		
f 12 35		□ 10 31	10 26	U 5 28	740.7	" Ocala (Silver Springs.).....		f 4 00	□ 2 08	W 5 42	U 9 46	
f 12 44			S 10 35		748.5	" Santos.....		f 4 04		W 5 34		
f 12 50			S 10 38		752.4	" Belleview.....		f 4 00		W 5 26		
f 12 57			S 10 42		756.4	" Summerfield.....		f 3 51		W 5 18		
1 05			S 10 47		762.2	" Oxford.....		f 3 43		W 5 10		
1 30	10 00	11 05	11 00	5 55	766.8	Ar Wildwood.....	Lv	3 35	1 40	W 5 02		
1 55	10 10	11 15	11 35	6 05	766.8	Lv Wildwood.....	Lv	3 10	1 30	W 4 54		
			f 11 42		771.4	Ar Coleman.....	Lv			f 4 44		
			f 11 52		782.9	Ar Center Hill.....	Lv			f 4 15		
			f 12 28		816.2	" Polk City.....	Lv			f 4 03		
			12 43		825.4	" Auburndale.....	Lv	Q 1 55		f 3 51		
3 00			1 00	11 7 05	831.4	" Winter Haven (Cypress Gardens).....	Lv	1 50	12 27	f 3 43		
3 07			1 20	11 7 16	841.1	Ar W. Lake Wales-Lake Wales (Bok Tower).....	Lv	1 40	12 18	f 3 35		
3 30			1 20	11 7 16	841.1	Ar W. Lake Wales-Lake Wales (Bok Tower).....	Lv	1 40	12 18	f 3 27		
3 30			1 32		853.0	Ar West Frostproof.....	Lv			f 3 20		
3 50	11 09	12 12	1 43	11 7 37	863.8	" Avon Park.....	Lv	1 08	11 54	f 3 12		
4 10	11 20	12 22	2 15	11 7 47	872.8	" Sebring (Highlands Hammock State Park).....	Lv	12 55	11 44	f 3 05		
4 20	11 50	12 53	2 48	xx 8 22	898.6	" Ft. Basinger.....	Lv			f 2 44		
4 52			3 04		914.3	" Okeechobee.....	Lv			f 2 36		
5 32			3 44		919.0	" Sherman.....	Lv			f 2 28		
6 05			4 17	9 23	942.9	" Indiantown.....	Lv	11 36		12 05		
6 40	1 23	2 28	4 39	11 9 23	975.5	" WEST PALM BEACH-PALM BEACH.....	Lv	10 58	10 18	12 05		
6 45	1 30	2 35	4 52	11 9 30	982.1	" Lake Worth.....	Lv	Z 10 37	10 09	11 25		
6 58			5 15		988.9	" Boynton Beach.....	Lv	Z 10 27		11 07		
7 05	1 40	2 45	5 24	11 9 42	998.1	" Delray Beach.....	Lv	Z 10 21		11 57		
7 18	1 50	2 54	5 42	11 9 52	1003.9	" Deerfield Beach (Boca Raton Club).....	Lv	Z 10 07		12 01		
7 31			5 48		1010.7	" Pompano Beach.....	Lv	Z 9 59		12 07		
7 34	2 10	3 09	5 55	11 10 10	1017.9	" Ft. Lauderdale.....	Lv	Z 9 47		12 09		
7 41	2 23	3 19	6 02	11 10 22	1022.4	" Dania.....	Lv	Z 9 36	9 34	12 17		
8 12			6 12		1025.3	" Hollywood.....	Lv	Z 9 32	9 25	12 25		
8 30	2 55	3 55	6 23	11 10 42	1027.1	" Hallandale.....	Lv			12 33		
10 00	6 00	6 00	6 40	12 01	1035.6	" Opa-Locka.....	Lv	9 10	9 08	12 44		
2 10	9 30	9 30	6 40	4 10	1042.0	" Hialeah (International Airport).....	Lv	9 00	9 00	1 02		
PM	PM	PM	AM	PM	1045.6	Ar MIAMI.....	Lv	9 00	9 00	1 02		
						Lv KEY WEST.....	Lv	7 10	4 25	1 02		
								3 00	12 30	12 30		

Characters explained on pages 41-42.
Equipment on pages 9-10.

TABLE 3-A

CONNECTING AIR SERVICE

To and from International Airport, Miami—Adjacent to Seaboard Hialeah Station
All Eastern Standard Time Unless Shown Otherwise
PAN AMERICAN AIRWAYS, INC.

DAILY				DAILY			
AM	AM	PM	PM	PM	AM	AM	PM
8:00	11:45	2:20	5:40	8:30	Lv Miami Ar	9:00	10:45
9:00	12:45	3:20	6:40	9:30	Ar Havana Lv	8:00	9:45
AM	PM	PM	PM	PM		AM	AM
AM	AM	PM	PM	PM	AM	PM	PM
7:00	8:00	7:45	Lv Miami Ar	8:58	6:28	10:43	2:10
7:58	8:58	8:43	Ar Havana Lv	8:00	5:30	9:45	3:45
AM	AM	PM	AM	AM	PM	PM	PM

MIAMI-NASSAU SERVICE
DAILY FLIGHTS

MIAMI-MEXICO CITY SERVICE
DAILY FLIGHTS

British Overseas Airways			Pan American Airways		Pan American Airways	
Lv Miami	8:30 AM	3:30 AM	8:40 AM	4:10 PM	4:00 PM	Lv Miami
Ar Nassau	9:30 AM	9:30 AM	9:40 AM	5:10 PM	1:30 PM	Ar Mexico City (CST)
Lv Nassau	5:00 PM	10:15 AM	5:30 PM	6:30 PM	Ar Havana Lv	6:45 AM
Ar Miami	6:00 PM	11:15 AM	6:30 PM		11:55 PM	

STEAMER SERVICE TO HAVANA AND NASSAU

THE PENINSULAR & OCCIDENTAL STEAMSHIP COMPANY S. S. "FLORIDA"

Mon.-Wed.-Fri	PM 6:00	Lv Miami	Ar	AM 8:30	Wed.-Fri.-Mon
Tues.-Thurs.-Sat.	8:00	Ar Havana	Lv	6:00	Tues.-Thurs.-Sun.
	AM			PM	

DOMINICAN REPUBLIC STEAMSHIP LINE
S.S. "Neuvo Dominicano"

5:00 PM	Lv. Miami	Ar. 8:00 AM
10:00 AM	Ar. Nassau	Lv. 2:00 PM

FOR SAILING DATES
SEE YOUR TRAVEL AGENT

SCHEDULES BETWEEN EASTERN CITIES AND FLORIDA THROUGH VIRGINIA, THE CAROLINAS AND GEORGIA
(Continued)

Read Down				Miles from Richmond	TABLE 4		Read Up				
9-1	21-121	57-157	7-107		Daily Trains	Eastern Standard Time	2-10	122-22	158-58	108-8	
PM	AM	AM	AM				AM	PM	PM	PM	
10 00	---	8 58	8 35	639.6	Lv JACKSONVILLE	FLA.	Ar	7 30	---	3 52	7 45
f10 20	---	† 9 16	R88 55	657.9	" Baldwin	"	Lv	f 6 44	---	---	ii 7 11
f10 41	---	---	89 14	676.9	Ar Lawtey	"	"	f 6 23	---	---	W 6 54
10 58	---	---	9 25	698.8	" Starke	"	"	6 12	---	---	W 6 46
f11 08	---	---	89 33	690.0	" Hampton	"	"	f 6 00	---	---	W 6 38
11 18	U 4 48	□ 9 51	9 40	695.4	" Waldo (Gainesville)	"	"	5 50	U 10 26	□ 2 48	W 6 30
f11 25	---	---	89 46	700.7	" Orange Heights	"	"	f 5 38	---	---	W 6 21
f11 35	---	---	f 9 53	709.7	" Hawthorne	"	"	f 5 17	---	---	f 6 12
f11 53	---	---	S10 05	722.3	" Citra	"	"	f 4 53	---	---	W 6 01
f11 58	---	---	S10 09	727.8	" Sparr	"	"	f 4 45	---	---	W 5 56
f12 03	---	---	S10 12	731.1	" Anthony	"	"	f 4 40	---	---	W 5 53
12 35	U 5 28	□ 10 31	10 26	740.7	" Ocala (Silver Springs)	"	"	4 30	U 9 46	□ 2 08	W 5 43
f12 44	---	---	S10 35	748.5	" Santos	"	"	f 4 04	---	---	W 5 28
f12 50	---	---	S10 38	752.4	" Belleview	"	"	f 4 00	---	---	W 5 25
f12 57	---	---	S10 42	756.4	" Summerfield	"	"	f 3 51	---	---	W 5 21
f 1 05	---	---	S10 47	762.2	" Oxford	"	"	f 3 43	---	---	W 5 16
1 50	5 55	11 05	11 00	766.8	Ar Wildwood	Homosassa Springs	Lv	3 35	9 20	1 40	5 10
f 2 00	6 10	11 20	11 30	766.8	Lv Wildwood	Homosassa Springs	Lv	1 10	9 00	1 15	4 45
f 2 16	---	---	S11 37	771.4	Ar Coleman	"	Lv	f12 53	---	---	---
f 2 44	---	---	S11 48	781.4	" Bushnell	"	Lv	12 36	---	---	f 4 18
f 2 55	11 6 49	⊙ 11 59	S12 04	795.7	" Lacochee	"	Lv	f12 10	---	---	---
f 3 20	---	---	⊙ 12 28	803.4	" Dade City	"	Lv	12 01	M 8 13	Q12 25	3 47
f 3 35	---	---	⊙ 12 44	812.9	" Zephyrhills	"	Lv	11 41	---	---	Q 3 32
f 3 39	---	---	S12 44	824.3	" Knights	"	Lv	f11 28	---	---	---
ii 3 59	11 7 15	⊙ 12 30	S1 02	833.2	" Plant City	"	Lv	11 06	M 7 45	Q11 59	3 05
ii 4 06	---	---	S1 07	837.8	" Turkey Creek	"	Lv	ii 10 58	---	---	---
ii 4 45	8 00	1 10	S1 10	840.1	" Sydney	"	Lv	ii 10 52	---	---	---
---	8 10	1 20	S1 13	841.3	" Valrico	"	Lv	---	---	---	---
---	---	---	S1 16	850.3	" Brandon	"	Lv	---	---	---	---
---	---	---	S1 19	850.3	Ar Tampa	"	Lv	---	---	---	---
---	---	---	S1 22	850.3	Lv Tampa	"	Lv	---	---	---	---
---	---	---	S1 25	856.8	Ar Sulphur Springs	"	Lv	---	---	---	---
---	---	---	S1 28	870.5	" Oldsmar	"	Lv	---	---	---	---
---	---	---	S1 31	875.4	" Safety Harbor	"	Lv	---	---	---	---
---	---	---	S1 34	883.0	" Clearwater (Belleview-Biltmore Hotel)	"	Lv	M 6 16	6 05	10 20	---
---	---	---	S1 37	884.4	" Belleair	"	Lv	M 5 59	Q10 14	Q10 13	---
---	---	---	S1 40	886.3	" Largo	"	Lv	---	Q10 13	f10 04	---
---	---	---	S1 43	892.7	" Bay Pines (Madeira Beach-Redington Beach)	"	Lv	---	---	---	---
---	---	---	S1 46	904.2	Ar ST. PETERSBURG	"	Lv	5 30	9 45	---	---

Winter Wonderland— Farm Land, That Is!

Mr. Northern Farmer, do you realize that in the wintertime when you are snowbound that a good many of your farm neighbors are enjoying the delights of shirtsleeve weather in South Florida? These neighbors of yours were at one time in the same boat you are in—snowbound in the winter months with farm equipment idle. However, they found a way to get out of that boat by farming in South Florida during the winter, thereby utilizing their farm equipment and farm organization to better advantage. And too, they are keeping their regular customers supplied with their brands of produce. This arrangement is a natural for making money, and while these neighbors of yours have been doing this, they have also found time to sneak off and do some deep-sea fishing and enjoy many other kinds of sports and entertainment found in South Florida. It's like eating your cake and having it, too.

Trained agricultural agents of this railroad will help you to find a desirable location. There is no charge for this service. A post-card addressed to me will bring full information.

J. N. McBride
General Agricultural Agent
Seaboard Air Line Railroad Company
105 Union Station Building
Savannah, Georgia

30-321	Miles	TABLE 5	Daily Trains	322-29
AM				PM
8 25	---	Lv TAMPA	FLA.	Ar
f 9 07	840.7	" Edison Jct.	"	f 5 50
f 9 18	847.9	" Bradley	"	f 5 42
f 9 24	851.1	" Brewster	"	f 5 36
f 9 30	860.9	" Fort Green	"	f 5 30
f 9 33	862.7	" Fort Green Springs	"	f 5 24
f 9 38	870.5	" Ona	"	f 5 06
f 9 43	878.5	" Limestone	"	f 4 50
10 22	888.5	" Arcadia	"	f 4 35
f10 38	897.8	" Hull	"	f 4 15
10 59	913.9	" Murdock	"	f 3 51
f11 12	921.8	" Charlotte Beach	"	f 3 37
11 30	935.1	" Gasparilla	"	f 3 16
11 45	938.1	" Boca Grande	"	f 3 10
11 55	940.5	Ar Port Boca Grande	Lv	3 00
---	---	(Yacht) Effective Jan. 1st	---	---
---	---	Lv Boca Grande	Lv	2 50
---	---	Ar Uceppa Island	Lv	2 10
12 40	---	---	---	PM
1 25	---	---	---	PM

SAFE!

One of the safest places in the world is a railroad train. Plan your next trip in comfort and safety via Seaboard.

Bus	Bus	26-257	Miles from Richmond	TABLE 6	Daily Trains	258-25	Bus	Bus	Bus
AM	AM	PM		Eastern Time		AM	AM	PM	PM
9 00	7 00	f 1 45	838.0	Lv TAMPA	FLA.	Ar	11 05	7 15	12 50
---	---	f 2 15	---	Ar Durant	"	Lv	f10 23	---	9 40
---	---	---	836.5	" BIG ALAFIA RIVER	"	---	---	---	---
---	---	---	845.0	" Lithia	"	f	---	---	---
---	---	---	849.7	" Boyette	"	---	---	---	---
---	---	---	853.8	" Balm	"	f	---	---	---
---	---	---	---	" Waimaua	"	f10 01	---	---	---
---	---	---	859.2	" LITTLE MANATEE RIVER	"	---	---	---	---
---	---	---	862.3	" Willow	"	f	---	---	---
---	---	---	865.4	" Vegetable	"	f 9 44	---	---	---
---	---	---	875.7	" Parrish	"	f 9 29	6 05	11 45	8 35
10 05	8 05	f 2 57	---	" Palmetto-Ellenton	"	---	---	---	---
---	---	f 3 15	---	---	"	---	---	---	---
10 10	8 15	f 3 25	877.4	" BIG MANATEE RIVER	"	---	---	---	---
---	---	---	878.9	" Bradenton	"	f 9 23	5 55	11 35	8 25
---	---	---	883.2	" Oneco	"	---	---	---	---
10 30	8 35	f 3 45	890.6	" Tallavast	"	---	---	---	---
---	---	f 4 05	897.2	" SARASOTA	"	f 9 05	5 35	11 10	8 05
---	---	---	902.1	" Bee Ridge	"	f 8 40	---	---	---
---	---	---	907.2	" Osprey	"	f	---	---	---
---	---	---	908.0	" Laurel	"	f	---	---	---
11 10	9 15	f 4 40	909.9	" Nokomis	"	f	---	---	---
AM	AM	PM		Ar VENICE	"	Lv	8 20	4 50	10 30

Equipment of trains on pages 9 and 10; explanation of characters on pages 41-42.

Safety Harbor, Fla. 'City of Healing Waters'

Steeped in romantic legend, Safety Harbor has long been known for its natural mineral waters. . . . Located on Old Tampa Bay, midway between Tampa and St. Petersburg, the town has several springs with an estimated daily volume of 100,000 gallons. . . . Hernando De Soto is said to have discovered these springs in 1539, after hearing the Indians speak of "the flowing healing waters." . . . Modern Spa facilities—Dr. Barth's Sanatorium and Espiritu Santo Springs Sanatorium—situated in beautiful natural surroundings make Safety Harbor a choice year-round health resort.

Conveniently served by
the "Silver Meteor"

TABLE 7

ST. PETERSBURG-TAMPA-
WEST PALM BEACH-MIAMI
THROUGH CENTRAL FLORIDA

28-427		Miles	DAILY SCHEDULES		10-428	
PM	AM		Ar	Lv	AM	PM
9				ST. PETERSBURG (EST)	Ar	3 25
		0.0		Bay Pines (Medeira Beach-Redington Beach)	"	
		10.28		Belleair	"	
		19.88		Clearwater (Bellevue-Biltmore Hotel)	"	
		21.28		Oldsmar	"	
		22.28		TAMPA	Lv	2 40
		53.9		TAMPA	Ar	2 25
		10.00		Plant City	"	1 45
		10.40		Bartow	"	1 00
		11.25		W. Lake Wales-Lake Wales Bok	Ar	12 30
		11.50		W. Lake Wales-Lake Wales/Tower	Ar	12 18
		107.7		Avon Park	"	11 54
		122.10		Sebring (Highlands Hammock State Park)	"	11 44
		124.4		West Palm Beach-Palm Beach	Lv	10 18
		28.239		Lake Worth	"	10 09
		35.248		Delray Beach	"	9 58
		45.259		Deerfield Beach (Boca Raton Club)	"	9 47
		54.270		Fort Lauderdale	"	9 34
		69.284		Hollywood	"	9 25
		19.291		MIAMI	Ar	9 00
		35.312		MIAMI (Fla. Greyhound Lines Bus)	Ar	4 25
		6.00		KEY WEST	Ar	7 10
		9.30				3 00

Explanation of characters, pages 41-42.

GROSS FLORIDA DAY SERVICE—Bus-Train Nos. 57 and 58.

Coaches, Pullman and Dining Car West Lake Wales-Miami.
Parlor Busses Tampa-West Lake Wales.

GROSS FLORIDA NIGHT SERVICE—Nos. 28-427-9 and 10-428-27.

Coaches Tampa-Miami.
Sleeping Cars: E.B. W.B. Line
10 Sec. 1 DR, 2 Cpt. CS-2 CS-2 6700 Tampa-Miami.

TABLE 8

JACKSONVILLE-TALLAHASSEE-
PENSACOLA-MOBILE-NEW ORLEANS-
TEXAS-CALIFORNIA

SAL No. 2-10-37 L&N No. 62-99		SAL No. 58-39 L&N No. 60-99		Miles	DAILY SCHEDULES	L&N No. 34-61 SAL No. 38-57		L&N No. 38-63 SAL No. 36-9-1	
PM	AM	PM	AM			Ar	Lv	AM	PM
9 00	9 00				Lv MIAMI (EST) (SAL)	Ar	3 55	8 30	
	9 45				ST. PETERSBURG	"	2 55		
	11 30				TAMPA	"	1 10	1 45	
10 30					Ar Baldwin	Lv	9 16		
6 44					JACKSONVILLE	"	8 58	10 00	
7 30	3 52			0.0	Lv JACKSONVILLE	Ar	9 00	6 30	
	5 00			18.3	Baldwin	Lv	8 16	5 45	
				27.2	McClenny	"		5 28	
				29.5	Glen St. Mary	"			
				36.5	Sanderson	"			
				58.8	Lake City	"			
				70.3	Wellborn	"			
				81.0	Live Oak	"			
				102.0	Lee	"			
				109.4	Madison	"			
				123.2	Greenville	"			
				130.6	Aucilla	"			
				138.0	Drifton	"			
				146.9	Lloyd	"			
				165.0	TALLAHASSEE	"	5 35	2 00	
				189.0	Quincy	"	4 53	1 17	
				207.6	Ar CHATTAHOOCHEE	Lv	4 30	12 50	
				207.6	Lv CHATTAHOOCHEE (L&N)	Ar	4 25	12 40	
				368.6	Ar Pensacola (CST)	Lv	11 39	6 30	
				368.6	Ar Pensacola	Lv	11 29	5 50	
				412.6	Ar Flomaton	Lv	10 30	4 30	
				462.6	Ar Mobile	Lv	8 45	2 45	
				612.6	Ar NEW ORLEANS	Lv	5 00	11 00	
1230 1 Da	11 00 1 Da				Lv NEW ORLEANS (CST) (S P)	Ar	4 00 3 Da	7 00 4 Da	
7 30 1 Da	7 15 1 Da				Ar Houston	Lv	9 00 3 Da	10 00 3 Da	
11 40 1 Da	1 30 2 Da				Ar San Antonio	Lv	4 35 3 Da	2 50 3 Da	
11 10 1 Da	6 35 2 Da				Ar El Paso (MST)	Lv	3 05 2 Da	8 05 2 Da	
5 40 2 Da	3 25 3 Da				Ar Tucson	Lv	8 10 2 Da	11 35 2 Da	
8 15 2 Da					Ar Phoenix	Lv	5 45 2 Da		
4 30 2 Da	3 45 3 Da				Ar Los Angeles (PST)	Lv	8 00 1 Da	8 30 1 Da	
9 00 3 Da	9 00 4 Da				Ar SAN FRANCISCO	Lv	5 8 15 1 Da	5 8 15 1 Da	

Equipment on pages 9-10. Explanation of characters, pages 41-42.

See BOTH COASTS of FLORIDA
CIRCLE TOUR OF FLORIDA ON ONE TICKET-NO EXTRA RAIL COST



All Round-Trip Tickets via Seaboard Air Line Railroad Co. through Jacksonville or Chattahoochee destined to West Palm Beach, Miami or any intermediate point will be honored over the Seaboard's direct route or via Tampa or St. Petersburg in one or both directions without additional rail cost. The circle tour, in one direction direct and in the opposite direction via St. Petersburg, enables the passenger, without additional rail cost, to visit all of the following cities: Ocala (Silver Springs), Auburndale, Winter Haven (Florence Villa), West Lake Wales (Mountain Lake), Avon Park, Sebring, Bartow, Tampa, Safety Harbor, Clearwater, Belleair, St. Petersburg.

Palmetto-Ellenton, Bradenton, Sarasota, Venice, Boca Grande or Port Boca Grande may also be included **without additional rail charge**. Side trip tickets may be secured at time of purchase or obtained from Seaboard agents at Miami, West Palm Beach, St. Petersburg or Tampa.

OPTIONAL ROUTES IN FLORIDA
Apply on All Round-Trip Tickets

Tickets or Coupons Reading
Seaboard Air Line Railroad Co.:

To Miami, may be honored on either going or return trip to or from Arcadia, Boca Grande, Port Boca Grande, Palmetto-Ellenton, Bradenton, Sarasota or Venice (direct or via Tampa or St. Petersburg). Passengers must arrange for their own transportation between Miami and station from or to which use of ticket will be made. Baggage may be checked from or to Miami direct or from or to station to or from which ticket is to be used, passengers making own arrangements for handling of baggage between Miami and such station.

To Arcadia, Boca Grande, Port Boca Grande and intermediate points will be honored via Tampa, or via West Lake Wales.

To Palmetto-Ellenton, Bradenton, Sarasota, Venice and intermediate points will be honored via Tampa.

To Sarasota, Venice and intermediate points will be honored via Tampa or West Lake Wales.

To St. Petersburg, will be honored direct or via West Lake Wales.

For optional honoring arrangements and schedules in connection with Florida Greyhound Lines and Tamiami Trail Tours, Inc., see tables 9 and 10, pages 25 and 26.

Optional Honoring Arrangements Via

FLORIDA GREYHOUND LINES AND TAMiami TRAIL TOURS

Through tickets reading via SAL Railroad to destinations listed below will be honored via the Florida Greyhound Lines and Tamiami Trail Tours in accordance with their schedule shown:

FLORIDA GREYHOUND LINES BUSES

VIA JACKSONVILLE TO AND FROM ORLANDO					
Lv Jacksonville	81	83	85	87	91
Ar Orlando	3 00AM	7 00AM	11 00AM	3 15PM	11 00PM
Lv Orlando	100	90	92	82	84
Ar Jacksonville	7 15AM	9 30AM	1 35PM	5 53PM	9 56PM
	11 56AM	2 15PM	6 25PM	10 25PM	2 05AM

VIA OCALA TO AND FROM ORLANDO						
Lv Ocala	AM	AM	PM	PM	PM	AM
Lv Leesburg	7 00	10 50	1 25	2 55	6 20	12 35
Lv Tavares	8 00	11 52	2 29	4 00	7 22	1 30
Lv Zellwood	8 18	12 10	2 46	4 17	7 37	1 42
Lv Plymouth	8 55	12 43	3 18	4 52	8 06	2 10
Lv Apopka	9 00	12 49	3 25	4 57	8 13	2 16
Lv Lockhart	9 06	12 55	3 30	5 02	8 18	2 22
Lv Orlando	9 15	1 06	3 40	5 12	8 31	2 31
Ar Orlando	9 30	1 20	3 55	5 28	8 47	2 45

Lv Orlando	AM	AM	PM	PM	PM	AM
Lv Lockhart	7 30	9 00	1 00	4 40	4 50	11 00
Lv Apopka	7 44	9 13	1 12	5 03	5 13	11 10
Lv Plymouth	7 55	9 25	1 24	5 15	5 25	11 20
Lv Zellwood	8 00	9 29	1 29	5 19	5 29	11 24
Lv Tavares	8 07	9 35	1 35	5 26	5 36	11 30
Lv Leesburg	8 44	10 12	2 12	6 00	6 10	11 59
Lv Orlando	9 05	10 33	2 33	6 15	6 21	12 15
Ar Ocala	10 10	11 34	3 35	7 24	7 24	1 07

Note-Tickets reading via SAL from or to St. Petersburg via Tampa will be honored on any Florida Greyhound Bus between Tampa and St Petersburg.

TAMiami TRAIL TOURS BUSES

TAMPA-SARASOTA-VENICE

Tamiami Trail Tours will honor to or from all points via Tampa

Lv Tampa	AM	AM	AM	AM	PM	PM	PM	PM	PM
Lv Palmetto	4 30	7 00	9 00	11 00	2 30	4 30	6 00	9 00	10 00
Ar Bradenton	5 35	8 05	10 05	12 05	3 35	6 10	7 05	10 05	11 05
Ar Sarasota	5 40	8 15	10 10	12 15	3 45	6 10	7 30	10 15	11 15
Ar Venice	6 00	8 35	10 30	12 40	4 10	6 35	7 55	10 40	11 35

JACKSONVILLE-WALDO-GAINESVILLE OCALA-DUNNELLON-TAMPA-ST. PETERSBURG				
To or from Gainesville via Fla. Greyhound Lines via Jacksonville or Waldo				
From the north to other points via Fla. Greyhound Lines from Jacksonville, Waldo, Ocala or Tampa				

Lv Jacksonville	103	105	107	111
Lv Waldo	5 00AM	9 00AM	1 00PM	5 00PM
Lv Gainesville	6 22AM	10 55AM	2 48PM	6 52PM
Lv Ocala	6 45AM	11 15AM	3 10PM	7 16PM
Lv Dunnellon	6 55AM	11 28AM	3 15PM	7 25PM
Lv Brooksville	7 55AM	12 30PM	4 18PM	8 23PM
Lv Tampa	11 18AM	3 52PM	7 45PM	3 00AM
Lv St. Petersburg	12 15PM	4 45PM	8 48PM	4 00AM

Lv St. Petersburg	112	102	116	118	108
Lv Tampa	6 45AM	10 45AM	12 30PM	4 30PM	9 30PM
Lv Brooksville	7 40AM	11 45AM	1 30PM	5 30PM	10 30PM
Lv Dunnellon			2 37PM		11 32PM
Lv Gainesville			3 54PM		
Lv Waldo	10 59AM	3 02PM	5 04PM	9 06PM	1 15AM
Lv Gainesville	11 54AM	4 01PM	6 03PM	10 05PM	2 14AM
Lv Brooksville	12 01PM	4 10PM	6 10PM	10 20PM	2 29AM
Lv Waldo	12 20PM	4 29PM	6 29PM	10 39PM	2 47AM
Lv Jacksonville	2 00PM	6 15PM	8 15PM	12 10AM	4 10AM

WESTERN UNION TELEGRAMS . . .

Every railroad traveler automatically has a charge account with Western Union and can send telegrams enroute easily and conveniently under a new plan in operation with the cooperation of the railroads.

This plan avoids the necessity for cash payment. The traveler merely hands his telegram, written on a special new telegraph blank, to the train attendant for dispatch at the next stop. Sender can charge message to his home address, to his business charge account, Western Union Credit Card number, or can send it collect. The new arrangement will save time involved in figuring tolls and making change.

The Western Union Telegraph Company handles messages at public telegraph offices on this railroad.

TABLE 10

MIAMI-KEY WEST SERVICE VIA FLORIDA GREYHOUND LINES

Through tickets are issued via SAL Railroad to Miami thence Florida Greyhound Lines to Key West and intermediate stations.

Consult Ticket Agents.

Lv Miami	AM	AM	AM	AM	PM	PM	PM	PM
Lv Homestead	1 30	6 00	8 00	10 00	12 01	3 00	6 00	8 00
Lv Tavernier	2 25	6 55	9 05	11 05	1 05	4 05	6 45	9 05
Lv Pirates Cove	3 07	7 41	9 51	11 49	1 49	4 51	7 30	9 49
Ar Key West	4 57	9 27	11 45	1 40	3 40	6 45		11 40
	5 25	9 55	12 15	2 10	4 10	7 15	9 30	12 10

Lv Key West	AM	AM	AM	PM	PM	PM	AM
Lv Pirates Cove	7 00	9 00	11 00	12 30	3 00	5 00	7 30
Lv Tavernier	9 30	11 30	1 00	3 30	5 30	8 00	12 30
Lv Homestead	8 55	11 20	1 23	2 50	5 23	7 23	9 50
Ar Miami	9 40	12 05	2 10	3 35	6 05	8 10	10 35
	10 30	1 10	3 15	4 40	7 10	9 15	11 40

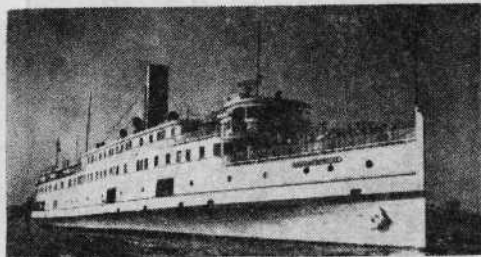
Limited Bus-Seats Reserved without additional cost.

service between New York, Washington, Virginia, the Carolinas, Georgia and Florida.



SEABOARD AIR LINE RAILROAD and Connection

SCHEDULES BETWEEN EASTERN CITIES AND ATLANTA, BIRMINGHAM AND THE SOUTHWEST THROUGH VIRGINIA AND THE CAROLINAS



A Delightful Overnight Trip
Via
Baltimore Steam Packet Co.
(Old Bay Line)
Between
Norfolk and Baltimore

DAILY SCHEDULES

Lv. NORFOLK	6 30PM	EST
Lv. OLD POINT COMFORT	7 30PM	EST
Ar. BALTIMORE	6 30AM	EST
Lv. BALTIMORE	6 30PM	EST
Ar. OLD POINT COMFORT	5 30AM	EST
Ar. NORFOLK	6 30AM	EST

And Between
Norfolk and Washington
With Sailings Every Other Day In Each
Direction—

Lv. NORFOLK	6 00PM	EST
Lv. OLD POINT COMFORT	7 00PM	EST
Ar. WASHINGTON	7 00AM	EST
Lv. WASHINGTON	6 30PM	EST
Ar. OLD POINT COMFORT	6 40AM	EST
Ar. NORFOLK	8 00AM	EST

SAILING DATES

Steamer sails from Norfolk and Old Point Comfort on EVEN dates during December, February and March, ODD dates during January. Steamer sails from Washington on ODD dates during December, February and March, EVEN dates during January.

EXPRESS IT!

for friendly shipping
help... and sure, fast
service...

**ALWAYS ASK
THE EXPRESS MAN!**

**INSURE
YOUR
FUTURE
BUY
AND
HOLD
VICTORY
BONDS**

Daily Trains—Read Down						TABLE 11		Daily Trains—Read Up						
171	13	5	173	173		NYNH&H PRR RF&P SAL		172	12	176	170			
143	155	125	121	119	Miles			150	112	130	196	174	170	
9	95	33	107	33				94	110	96	34	108	108	
9	5	33	7	11				12-4	10	6	34	8	8	
PM	Noon	AM	PM	PM				AM	PM	PM	PM	PM	PM	
3 00	12 00	11 00	11 00	11 00				8 10	2 25	8 25	6 45	11 25		
8 30	5 30	12 30	10 30	3 30	0.0	Lv	BOSTON (NYNH&H)	Ar	1 35	9 20	3 05	c 1 30	6 45	
8 45	5 45	12 45	10 45	3 45	10.0	Lv	NEW YORK (PRR—Penn. Station)	Ar	1 20	9 05	2 50	c 1 14	6 29	
9 29	6 33	1 31	11 33	4 41	58.1	"	Newark	Lv	12 35	8 19	2 00	c12 30		
9 57	7 03	2 01	12 04	5 16	85.9	"	Trenton	"	12 06	7 50	1 32	c12 03	5 22	
10 06	7 16	2 10	12 20	5 38	91.7	"	North Philadelphia	"	11 52	7 30	1 23	c11 54	5 13	
10 39	7 48	2 39	12 50	6 14	118.1	"	PHILADELPHIA (30th St. Station)	"	11 20	6 55	12 50	c11 25	4 42	
11 44	8 53	3 45	1 58	7 30	186.5	Ar	Baltimore	Lv	10 10	5 50	11 41	c10 25	3 41	
12 25	9 35	4 25	2 40	8 15	226.6	Ar	WASHINGTON	Lv	9 30	5 05	11 00	c 9 45	3 00	
1 10	10 00	5 00	3 15	9 00	0.0	Lv	WASHINGTON (RF&P)	Ar	8 45	4 00	10 00	9 20	2 20	
1 29	10 19	5 18	3 34	9 18	8.2	Lv	Alexandria VA.	Ar	8 22	3 37	9 37	J 8 57	1 57	
2 00	10 50	5 47	4 05	9 50	34.7	"	Quantico	"	7 42	2 41	9 00	y 8 20	1 20	
2 25	11 17	5 59	4 35	10 17	54.1	"	Fredericksburg	"	7 06	2 41	8 35	y 8 03	12 55	
4 05	12 45	7 38	6 01	11 50	116.5	Lv	RICHMOND (Main St. Station)	Ar	5 20	1 10	6 55	6 40	11 25	
4 05	1 10	7 38	6 15	12 15	0.0	Lv	RICHMOND (Main St. Station) JAMES RIVER	Ar	4 50	12 45	6 15	6 40	11 00	
4 36	1 51	8 04	6 45	1 03	22.7	"	Petersburg ROANOKE RIVER VA.	"	4 20	11 51	5 44	N 6 09	10 23	
6 02	3 20	—	8 11	2 42	88.4	Ar	Norlina N. C.	Lv	2 23	10 17	4 06	—	9 00	
			8 11	2 42	98.2	Lv	Norfolk (FERRY) ELIZABETH RIVER	Ar					No. 18	12 40
			4 10	0.0	0.0	Lv	Portsmouth	"					12 25	
			4 30	0.0	17.4	Lv	Suffolk	"					11 54	
			5 00	25.9	34.7	Lv	Purvis	"					11 39	
			5 11	31.2	36.7	Lv	Carrsville	"					11 32	
			5 18	36.7	36.9	"	BLACKWATER RIVER	"						
			5 30	41.8	43.4	"	Franklin	"					11 22	
			5 38	43.4	48.8	"	Hand	"					11 06	
			5 45	48.8	53.8	"	Newsoms	"					11 58	
			5 58	53.8	56.9	"	Boykis	"					10 49	
			6 03	56.9	62.9	"	Branchville VA.	"					11 41	
			6 10	62.9	68.9	"	MERRIN RIVER N. C.	"					11 32	
			6 19	68.9	72.4	"	Margaret	"					11 23	
			6 24	72.4	76.0	"	Seaboard	"					11 17	
			6 31	76.0	78.1	"	Gumberry	"					11 11	
			6 40	78.1	78.6	"	Garysburg	"					11 00	
			6 50	78.6	83.0	"	ROANOKE RIVER	"					9 46	
			7 08	83.0	98.5	"	Weldon	"					9 28	
			7 17	98.5	104.2	"	Roanoke Rapids	"					9 21	
			7 24	104.2	109.3	"	Littleton	"					9 18	
			7 31	109.3	113.3	"	Vaughan	"					9 12	
			7 40	113.3	115.8	"	Mason	"					9 05	
			8 10	115.8	98.2	Ar	Warren Plains	"					9 00	
			8 17	98.2	113.4	Lv	Norlina	Lv	2 23	10 17	4 06	V 9 00		
			8 29	113.4	157.2	Lv	Henderson	Lv	1 50	9 56	3 22	V 4 38	V 8 31	
			8 40	157.2	157.2	Lv	RALEIGH	Lv	12 45	9 05	2 20	3 55	V 7 45	
			8 45	157.2	199.3	Lv	RALEIGH	Ar	12 20	8 45	1 50	3 50	V 7 35	
			8 51	199.3	225.2	Lv	Sanford	"	11 06	7 48	12 40	V 6 47		
			8 54	225.2	229.0	"	Southern Pines (Pinehurst)	"	10 27	7 17	12 01	V 6 17		
			8 57	229.0	253.8	"	Aberdeen	"	10 10	7 05	11 42	V 5 45		
			9 00	253.8	262.7	Ar	Hamlet	Lv	9 40	6 40	11 15	2 10	5 45	
			9 04	262.7	265.2	Lv	Hamlet	Ar	8 30	10 20	11 55	—	—	
			9 08	265.2	273.6	Lv	Rockingham	Lv	8 16	10 08	—	—	—	
			9 11	273.6	278.5	Lv	Steele's Mill	qq	—	—	—	—	—	
			9 15	278.5	286.6	"	PEE DEE RIVER	"	qq8 03	—	—	—	—	
			9 18	286.6	290.5	"	Lilesville	"	qq7 55	—	—	—	—	
			9 22	290.5	296.2	"	Wadesboro	"	7 47	—	9 39	A 1 23	—	
			9 25	296.2	300.9	"	Polkton	"	qq7 28	—	—	—	—	
			9 28	300.9	306.4	"	Peachland	"	qq7 23	—	—	—	—	
			9 30	306.4	312.4	"	Marshville	"	qq7 18	—	—	—	—	
			9 34	312.4	318.7	"	Wingate	"	qq7 13	—	—	—	—	
			9 37	318.7	322.4	Ar	Monroe	Lv	7 05	—	8 55	12 50	—	
			9 40	322.4	331.0	Lv	Monroe	Lv	6 50	—	8 45	12 45	—	
			9 43	331.0	334.8	Lv	Mineral Springs	f	6 23	—	8 25	—	—	
			9 46	334.8	338.0	Lv	Waxhaw N. C.	Lv	—	—	—	—	—	
			9 49	338.0	342.8	Lv	Van Wyck S. C.	f	—	—	—	—	—	
			9 52	342.8	348.0	"	CATAWBA RIVER	"	—	—	—	—	—	
			9 55	348.0	351.4	"	Lilesville	"	f 6 05	—	uu8 09	—	—	
			9 58	351.4	356.7	"	Edgemoor	Lv	f 5 55	—	—	—	—	
			10 01	356.7	363.0	"	Rodman	Lv	f 5 48	—	—	—	—	
			10 04	363.0	368.4	"	Chester	Lv	f 5 20	—	7 36	n11 53	—	
			10 07	368.4	375.1	"	Leeds	Lv	f 5 05	—	—	—	—	
			10 10	375.1	380.0	"	BROAD RIVER	"	—	—	—	—	—	
			10 13	380.0	389.9	"	TIGER AND ENOREE RIVERS	"	—	—	—	—	—	
			10 16	389.9	397.1	"	Whitmire	"	—	—	—	—	—	
			10 19	397.1	406.5	"	Reno	"	—	—	—	—	—	
			10 22	406.5	410.9	"	Clinton	"	—	—	—	—	—	
			10 25	410.9	415.2	"	Mountville	"	f 3 39	—	—	—	—	
			10 28	415.2	424.9	"	Cross Hill	"	f 3 29	—	—	—	—	
			10 31	424.9	—	Ar	GREENWOOD SALUDA RIVER	"	—	—	—	—	—	
			10 34	—	—	Ar	Greenwood	"	3 10	—	5 56	n10 30	—	
			10 37	—	—				AM	PM	PM	PM		

SCHEDULES BETWEEN EASTERN CITIES AND ATLANTA, BIRMINGHAM AND THE SOUTHWEST THROUGH VIRGINIA AND THE CAROLINAS

Read Down			Miles from Richmond	TABLE 11 (Continued)		Read Up		
5	33	11		DAILY TRAINS			12	6
PM	AM	AM		Lv Greenwood	Ar	AM	PM	PM
12 50	n 4 03	1 05	424.9	LONG CANE CREEK		3 10	5 56	n 10 30
1 15	n 4 25	1 40	435.6	" Abbeville	Lv	2 30	5 30	n 10 09
f 1 32	—	2 00	440.6	" LITTLE RIVER	"	2 00	f 5 03	—
—	—	f 2 20	449.1	" Calhoun Falls	"	f 1 45	—	—
—	—	f 2 20	454.5	" SAVANNAH RIVER	"	f 1 25	—	—
1 55	n 5 03	2 37	457.2	" Heardmont	GA.	f 12 59	4 35	n 9 26
—	—	f 2 55	461.1	" Middleton	"	—	—	—
—	—	f 3 14	465.5	" Elberton	"	—	—	—
2 15	—	f 3 00	471.3	" Ogleby	"	f 12 54	—	—
2 24	—	f 3 08	478.9	" NORTH BROAD RIVER	"	f 12 46	—	—
2 35	—	f 3 21	480.4	" Berkeley	"	f 12 35	—	—
—	—	f 3 21	483.4	" Comer	"	f 12 27	—	—
2 57	5 45	f 3 46	489.0	" Colbert	"	—	—	—
—	—	f 4 00	494.5	" Hull	"	—	—	—
—	—	f 4 25	499.4	" OCOONEE RIVER	"	—	—	—
3 30	—	f 4 36	505.2	" Athens	"	12 15	3 38	8 48
—	—	f 4 43	505.7	" Bogart	"	f 11 39	—	—
3 49	—	f 4 50	515.1	" Statham	"	—	—	—
—	—	f 5 02	519.1	" Russell	"	—	—	—
—	—	f 5 11	525.8	" Winder	"	11 15	2 54	a 8 22
—	—	f 5 11	527.0	" Auburn	"	f 11 08	—	—
—	—	f 5 23	533.5	" Dacula	"	f 11 00	—	—
—	—	f 5 38	538.1	" Lawrenceville	"	10 48	2 31	—
—	—	f 5 44	544.1	" Gloster	"	f 10 36	—	—
—	—	f 5 52	550.0	" Luxornal	"	—	—	—
—	—	f 5 52	555.4	" Lilburn	"	f 10 29	—	—
—	—	f 5 52	555.0	" Tucker	"	f 10 20	—	—
—	—	f 6 05	555.0	" Emory University	"	f 10 07	—	—
—	—	f 6 05	560.4	" ATLANTA	Lv	9 45	1 35	7 10
—	—	f 6 05	578.6	" ATLANTA	Ar	—	—	—
5 00	7 40	—	578.6	" CHATTAHOOCHEE RIVER	"	—	—	—
—	—	—	591.2	" NICKAJACK RIVER	"	—	—	—
—	—	—	609.8	" Dallas	"	f 12 12	—	—
—	—	—	626.0	" Rockmart	"	11 50	5 37	—
—	—	—	638.8	" Cedartown	"	11 31	5 21	—
—	—	—	648.2	" Esom (EST)	GA.	11 15	—	—
—	—	—	653.5	" Borden Springs (CST)	ALA.	—	—	—
—	—	—	662.6	" Piedmont	"	f 9 55	3 53	—
—	—	—	670.3	" Maxwellborn	"	f 9 42	—	—
—	—	—	681.2	" Wellington	"	f 9 23	3 31	—
—	—	—	688.0	" Ohatchee	"	f 9 12	—	—
—	—	—	690.5	" COOSA RIVER	"	—	—	—
—	—	—	691.3	" Lock	"	—	—	—
—	—	—	697.9	" Ragland	"	f 8 54	3 10	—
—	—	—	707.0	" Wattsville	"	f 8 40	2 58	—
—	—	—	716.3	" Odenville	"	f 8 24	—	—
—	—	—	721.6	" Sanie	"	f 8 14	—	—
—	—	—	725.1	" Parsons	"	f 8 07	—	—
—	—	—	728.4	" CAHABA RIVER	"	—	—	—
—	—	—	733.9	" Alton	"	—	—	—
—	—	—	745.1	" BIRMINGHAM	ALA. Lv	7 30	2 00	—
—	—	—	745.1	" BIRMINGHAM	(FRISCO) Ar	7 00	7 00	—
—	—	—	892.8	" Tupelo	MISS. Lv	1 35	1 35	—
—	—	—	952.0	" Holly Springs	" Lv	11 19	11 19	—
—	—	—	998.2	" MEMPHIS, TENN.	" Ar	9 45	9 45	—

Characters explained on pages 41-42

THE COTTON BLOSSOM

COACH TRAIN, HANDLES NO SLEEPING CARS.

COACH TRAIN, HANDLES NO SLEEPING CARS.

THE COTTON BLOSSOM

COACH TRAIN, HANDLES NO SLEEPING CARS.

OTHER PASSENGER TRAIN SERVICE

TABLE 12 WILMINGTON-HAMLET-CHARLOTTE-RUTHERFORDTON

13		Miles	DAILY TRAINS		14	
3 50PM	0.0	Lv	Wilmington (EST)	N. C.	Ar	1 30PM
5 51PM	67.6	Lv	Lumberton		Ar	11 01AM
6 19PM	79.0	Lv	Pembroke		Ar	10 20AM
6 35PM	88.9	Lv	Maxton		Ar	9 59AM
6 56PM	96.0	Lv	Laurinburg		Ar	9 34AM
7 40PM	111.1	Lv	Hamlet		Ar	9 05AM
9 05PM	111.1	Lv	Hamlet		Ar	8 20AM
9 15PM	117.3	Lv	Rockingham		Ar	8 07AM
9 49PM	135.8	Lv	Wadesboro		Ar	7 30AM
10 45PM	163.7	Lv	Monroe		Ar	6 35AM
10 45PM	163.7	Lv	Monroe		Ar	6 20AM
11 30PM	188.1	Lv	Charlotte		Ar	5 45AM
—	219.5	Lv	Lincolnton		Lv	—
—	241.1	Lv	Shelby		Lv	—
—	268.0	Lv	Rutherfordton		Lv	—

* Train will be held for connection from train 21 when passengers are reported.
NOTE—Frequent bus service operated by Queen City Coach Company—Through S. A. L. Railroad tickets honored.
Nos. 13 and 14—Between Wilmington and Charlotte, N. C. Coach service.

TABLE 13 HAMLET-CHARLESTON-SAVANNAH

25		25		Miles	DAILY TRAINS		26		26	
9 00AM	9 00AM	0.0	Lv	Hamlet (EST)	Ar	5 25PM	6 25PM	6 25PM	6 25PM	
9 28AM	9 29AM	17.5	Lv	McColl (EST)	Lv	4 45PM	5 45PM	5 45PM	5 45PM	
9 58AM	10 01AM	38.3	Lv	Dillon	Ar	4 10PM	5 10PM	5 10PM	5 10PM	
10 30AM	10 37AM	55.7	Lv	Mullins	Lv	3 39PM	4 39PM	4 39PM	4 39PM	
11 07AM	11 22AM	80.3	Lv	Poston	Lv	2 50PM	3 50PM	3 50PM	3 50PM	
11 22AM	11 40AM	88.8	Lv	Hemingway	Lv	2 31PM	3 31PM	3 31PM	3 31PM	
11 55AM	12 15PM	111.4	Lv	Andrews	Ar	2 00PM	3 00PM	3 00PM	3 00PM	
12 10PM	12 20PM	0.0	Lv	Andrews (SAL BUS)	Ar	1 40PM	2 40PM	2 40PM	2 40PM	
12 40PM	12 50PM	16.4	Lv	Georgetown	Lv	1 10PM	2 10PM	2 10PM	2 10PM	
11 20AM	11 40AM	0.0	Lv	Georgetown (SAL BUS)	Ar	2 25PM	3 25PM	3 25PM	3 25PM	
11 50AM	12 10PM	16.4	Lv	Andrews (SAL BUS)	Lv	1 55PM	2 55PM	2 55PM	2 55PM	
12 01PM	12 30PM	111.4	Lv	Andrews	Ar	1 40PM	2 40PM	2 40PM	2 40PM	
12 18PM	12 50PM	125.1	Lv	Jamestown	Lv	1 17PM	2 17PM	2 17PM	2 17PM	
—	—	136.8	Lv	Witherbee	Lv	—	—	—	—	
1 25PM	2 04PM	167.9	Lv	Charleston	Lv	12 02PM	1 40PM	1 40PM	1 40PM	
—	2 30PM	183.7	Lv	Meggetts	Lv	11 12AM	—	—	—	
—	3 07PM	215.5	Lv	Dale	Lv	10 33AM	—	—	—	
—	3 12PM	218.5	Lv	Lobeco	Lv	10 27AM	—	—	—	
—	3 48PM	246.3	Lv	Pritchard	Lv	9 44AM	—	—	—	
—	4 30PM	262.9	Lv	Savannah	Ar	9 00AM	—	—	—	

Nos. 25 and 26—Between Hamlet and Charleston-Savannah, Coach service.

TABLE 14 CUTHBERT AND TALLAHASSEE

Miles		DAILY TRAINS		SEE NOTE	
0.0	Lv	Cuthbert (EST)	GA.	Ar	—
26.4	Lv	Arlington		Lv	—
45.0	Lv	Colquitt		Lv	—
59.6	Lv	Lynn		Lv	—
65.8	Lv	Bainbridge	GA.	Lv	—
89.1	Lv	Havana	FLA.	Lv	—
106.1	Lv	Tallahassee	FLA.	Lv	—

NOTE—Bus service operated by Modern Coach Corp.—Through S. A. L. Railroad tickets honored.

TABLE 15 SAVANNAH AND LUMPKIN

Miles		DAILY TRAINS		SEE NOTE	
0.0	Lv	Savannah (EST)	GA.	Ar	—
48.4	Lv	Claxton		Lv	—
79.8	Lv	Vidalia		Lv	—
113.6	Lv	Helena		Lv	—
139.0	Lv	Abbeville		Lv	—
168.1	Lv	Cordele		Lv	—
198.6	Lv	Americus		Lv	—
227.2	Lv	Richland		Lv	—
235.8	Lv	Lumpkin	GA.	Lv	—

NOTE—Frequent bus service operated by Atlantic Stages, Inc.—Through S. A. L. Railroad tickets honored.

It Pays to SHIP SEABOARD!

Seaboard knows your shipping problems—gives personal attention to your shipments—speeds them to their destinations with Diesel motive power and other modern facilities. For dependable freight service to and from the Southeast—it pays to ship Seaboard!

For rates, schedules, routing, or assistance in handling your shipping problems, contact any Seaboard Freight Traffic Representative listed on pages 47-50, or the undersigned.

J. P. Derham, Jr.

Assistant Vice-President—Solicitation and Service
Seaboard Air Line Railroad Company
S.A.L. R.R. Building, Norfolk 10, Va.

PENNSYLVANIA RAILROAD

TABLE 17

CHICAGO-PITTSBURGH-WASHINGTON

54	2	b58	22	Central Standard Time Daily						
11 30	6 30	3 40	12 01	33-63	b59	1	71	55		
1 54	8 51	6 07	2 30	Lv CHICAGO, ILL.	Ar	7 10	8 30	10 35	1 15	3 40
		8 06	4 42	Fort Wayne, Ind.	"	4 20	5 56	7 53	10 20	1 05
		8 12	10 00	Lima, O. (EST)	"			7 55	10 22	1 08
9 10	3 30	3 10	12 35	PITTSBURGH, PA.	"	9 10	1 17	3 05	4 30	7 55
11 40	6 05	3 10	1 15	Altoona	"	6 40	10 48	12 36	2 01	5 30
2 15	8 50	5 31	4 15	Harrisburg	"	4 05	8 25	9 20	10 45	1 20
2 57	9 27	6 12	4 52	York, Pa.	"	3 25	7 44	8 31	10 01	12 54
4 33	11 17	47 47	6 40	Baltimore	Lv	1 56	6 15	7 02	8 32	11 22
5 20	12 10	8 35	7 35	WASHINGTON, D. C.	"	1 10	5 30	6 15	7 45	10 30

ROCHESTER-WASHINGTON VIA CANANDAIGUA

596		Eastern Standard Time		575	
* 7 10	Lv Rochester	NYC	Ar	p10 10	
8 55	" Canandaigua	PRR	"	7 50	
" 11 20	" Elmira, N. Y.	"	"	5 15	
2 21	" Williamsport, Pa.	"	"	1 25	
3 27	" Sunbury	"	"	12 34	
5 15	" Harrisburg, Pa.	"	"	10 45	
7 38	Ar Baltimore, Md.	"	Lv	8 32	
8 25	Ar WASHINGTON, D. C.	"	"	* 7 45	

ST. LOUIS-INDIANAPOLIS-WASHINGTON

32	e64	h30	4	66	Central Standard Time Daily					
6 30	1 00	12 40	10 15	9 00	25-27	33	h31	e65	3	67
10 50	3 45	3 25	1 05	11 45	Lv ST. LOUIS, MO.	Ar	8 10	8 20	1 10	1 40
10 50	3 45	3 25	1 05	11 45	Terre Haute, Ind.	"	4 07	5 22	10 10	10 43
10 50	3 45	3 25	1 05	11 45	Indianapolis, Ind.	"	2 25	3 58	8 45	9 23
10 50	3 45	3 25	1 05	11 45	Dayton, O. (EST)	"	12 50	2 42	4 20	9 27
10 50	3 45	3 25	1 05	11 45	Columbus, O.	"	11 00	1 10	1 50	11 15
10 50	3 45	3 25	1 05	11 45	Pittsburgh, Pa.	"	4 55	9 10	2 19	2 28
10 50	3 45	3 25	1 05	11 45	Altoona, Pa.	"	2 16	4 40	11 50	12 54
10 50	3 45	3 25	1 05	11 45	Harrisburg, Pa.	"	11 20	4 05	10 30	11 35
10 50	3 45	3 25	1 05	11 45	York, Pa.	"	10 37	3 25	11 50	12 54
10 50	3 45	3 25	1 05	11 45	Baltimore, Md.	Lv	9 03	1 56	7 02	8 32
10 50	3 45	3 25	1 05	11 45	WASHINGTON, D.C.	"	8 10	1 10	6 15	7 45

CLEVELAND-PITTSBURGH-WASHINGTON

10-38	38	Eastern Standard Time Daily		25-361	71-9	39	35-363
8 00	8 25	Lv CLEVELAND, O.	Ar	7 50	8 30	11 00	
9 33	"	Akron, O.	"	8 05	8 15	\$9 15	\$11 05
11 35	11 35	" Youngstown, O.	"	6 30	4 30		
4 50	4 50	PITTSBURGH, PA.	"	4 55	4 30		
7 00	7 00	Harrisburg, Pa.	"	11 20	10 45		
7 50	7 50	Baltimore, Md.	Lv	9 03	8 32	9 37	11 25
		WASHINGTON, D. C.	"	8 10	7 45	8 50	10 30

DETROIT-PITTSBURGH-WASHINGTON

g106-62-54	68	Eastern Standard Time Daily		g33-63-105	69
11 40	5 30	Lv DETROIT, MICH.	Ar	7 40	8 05
1 13	6 50	Toledo, O.	"	6 10	6 48
9 10	11 56	PITTSBURGH, PA.	"	9 10	1 30
2 15	5 15	Harrisburg, Pa.	"	4 05	8 16
4 33	7 38	Baltimore, Md.	Lv	1 56	6 05
5 20	8 25	WASHINGTON, D. C.	"	1 10	5 20

BUFFALO-WASHINGTON VIA OLEAN

574	570	Eastern Standard Time Daily		571	575
9 00	10 30	Lv BUFFALO, N. Y.	Ar	8 05	7 45
11 02	12 38	Olean, N. Y.	"	6 23	5 57
2 55	4 41	Williamsport, Pa.	"	1 43	1 26
5 19	7 05	Harrisburg, Pa.	"	11 20	10 45
7 38	9 35	Baltimore, Md.	Lv	9 03	8 32
8 25	10 30	WASHINGTON, D. C.	"	8 10	7 45

BOSTON AND ALBANY RAILROAD

43-55	606-85	49-53	691-75	Eastern Standard Time Daily		50-604	54-554	58-606	28-608	66-42
10 30	4 40	11 30	7 15	Lv BOSTON, MASS.	Ar	2 25	6 10	9 25	11 30	7 10
11 57	5 18	12 41	7 13	Worcester	"	1 27	5 00	8 27	10 32	5 53
1 58	6 35	2 35	10 07	Springfield, Mass. (SYNH&B)	"	12 00	3 35	7 12	9 19	4 20
4 25	7 54	4 08	11 30	New Haven, Conn.	"	10 14	1 55	5 40	7 50	2 04
6 38	9 19	5 49	1 00	NEW YORK, N. Y. (G. C. Ter.)	Lv	8 35	12 30	4 10	6 00	12 10

NEW YORK-PHILADELPHIA-NORFOLK

469	465	Eastern Standard Time Daily		454	468
9 00	10 30	Lv NEW YORK, N. Y.	Ar	8 55	7 35
10 35	12 05	N. PHILA., PA.	"	x7 26	6 00
11 10	9 50	PHILA., PA. (30th St.)	"	7 00	5 25
11 56	10 30	Wilmington, Del.	"	6 23	4 40
5 40	3 30	Cape Charles, Va.	Lv	1 20	11 25
6 40	3 55	Cape Charles, Va.	Lv	1 00	10 35
8 30	6 45	Ar Fort Monroe (Old Point Comfort)	Lv	11 00	8 35
9 30	6 45	NORFOLK, VA.	"	10 00	7 35

FLORIDA EAST COAST RAILWAY

Eastern Standard Time		30	38	2	6	74	8	*4	10	38	76
Lv JACKSONVILLE, Fla.	Ar	6 00	4 25	4 45	6 45	8 20	12 25	12 40	1 30	6 50	7 00
Ar St. Augustine	Lv	5 00	3 41	4 01	6 01	7 35	11 40	11 56	12 46	5 52	6 11
Ar Daytona Beach	Lv	2 36	2 47	3 08	5 08	6 39	10 44	11 02	11 52	2 5	3 03
Ar W. Palm Beach	Lv	3 00	11 02	11 22	1 23	2 41	6 46	7 16	8 06	9 26	10 03
Ar MIAMI	Lv	6 00	9 25	9 45	11 45	1 00	5 05	5 40	6 30	6 35	10 00

a Except every 3rd day. b Sleeping Cars and Reserved Seat Coaches. c On Sundays and holidays—Dec. 25, Jan. 1 and Feb. 23, due New York 7 30AM. f Flag stop. d Stops only to discharge passengers. e All Seat Reserved-Special Service Charge. g Ex Sat. & Dec. 25 and Jan. 1. h Daily ex. Dec. 24, 25, 26 and 31. p On Sundays arrives 9 36AM. * On Sundays leave Canandaigua 9 10PM, Elmira 11 18PM. x Passengers change cars at Wilmington. * Daily. * Week days except holidays. i On Sundays and Dec. 25 and Jan. 1 leave New York 7 30AM, No. Phila. 9 00AM. On weekdays ex. Dec. 25 and Jan. 1 passengers change car at Penna. Sta. (30th St.). † Except Sunday. ‡ On Sundays arrives New York 8 55PM. § Arrives 11 50PM. on Sundays. ¶ Bus on public highway between Hudson and Jan 1. * City of Miami" two out of every three days.

RICHMOND, FREDERICKSBURG AND POTOMAC RAILROAD

Eastern Standard Time		110	78	96	108	16	94
Lv WASHINGTON, D. C.	Ar	4 00	6 15	10 00	2 20	7 35	8 45
" Alexandria	"	x 3 37	5 53	9 37	1 57	7 14	8 22
" Quantico	"		5 21	9 00	1 20	6 45	7 42
" Fredericksburg	"	2 41	4 57	8 35	12 55	6 25	7 06
" Ashland	"					5 39	6 20
Ar RICHMOND, VA. (Broad St.)	Lv	3 50				5 20	
Ar RICHMOND, VA. (Main St.)	"	1 10		6 55	11 25	5 20	

* Stops on signal to discharge revenue passengers. z Coach on train 107 between Washington and Broad Street Station, Richmond; remainder of train via Main Street Station.

BALTIMORE AND OHIO RAILROAD

WASHINGTON-PITTSBURGH-AKRON-CLEVELAND-TOLEDO-DETROIT-CHICAGO									
22	8	20	18	*6	*6	10	Daily		
11 00	11 40	1 30	9 00	4 30	4 15	11 00	21	9	*5
Lv CHICAGO (CST)	Ar	6 45	8 00	8 20		2 50			
" Detroit (EST)	"	7 20		7 50		6 40			
" TOLEDO	"	5 30		6 30		5 15			
" CLEVELAND	"	8 55		8 10					
" Akron	"	12 15		2 50	3 10	7 02			
" Youngstown	"	1 50	2 15	5 57	8 15				
" PITTSBURGH	"	6 00	9 20	12 10	12 30	12 54	4 30	6 50	
" Martinsburg	"	11 37	3 25	7 24	11 07	1 10			
Ar WASHINGTON	Lv	10 05	1 45	5 30	5 40	5 50	9 30	11 35	

WASHINGTON-CINCINNATI-ST. LOUIS					
Daily					
12	4	2	11		
Lv ST. LOUIS (CST)	Ar	7 40	1 00	3 10	
Lv CINCINNATI (EST)	"	11 59	7 30	9 10	
" Chillicothe	"	8 08	5 12	6 55	
" Parkersburg	"	6 05	3 15	4 57	
" Clarksburg	"	3 43	1 05	2 46	
Ar Washington	Lv	8 00	6 30	8 30	

*-Pullman cars only. *-Reserved (free) seat coaches only on this train.

CHESAPEAKE & OHIO RAILWAY

Eastern Standard Time Daily									
47	41	43	Eastern Standard Time Daily			42	4-46	116	48
Lv NORFOLK, VA.	Ar	11 55	5 50			9 35			
" Newport News	"	10 35	5 50			8 15			
" RICHMOND	Lv	9 30	2 55			6 45			
" RICHMOND	Ar	8 30	2 30						
" Charlottesville	Lv	6 35	1 30						
" Charleston	"	10 45	4 00						
" Huntington	Lv	9 45	2 51						
" CINCINNATI	"	6 20	10 10						
" COLUMBUS	Lv	11 15							
" LOUISVILLE, KY.	Lv	1 40	6 01						
" DETROIT	Lv	7 50	5 50						
" CLEVELAND NYC STS	"	9 45	6 15						
" CHICAGO (CST) NYC STS	"	9 45	6 00						
" ST. LOUIS NYC STS	"	9 25	12 45						

NORFOLK & WESTERN RAILWAY

Eastern Standard Time Daily									
15	21	3	7	25	Eastern Standard Time Daily				
Lv NORFOLK, VA.	Ar	7 45	10 55	5 30	8 15	11 40			
" Suffolk	"	7 00	10 20	6 00	7 35	11 12			
Ar Petersburg	Lv	5 35	9 15	4 00	6 15	10 15			
Ar Richmond (Bd. St. Sta.) (ACL)	Lv	8 30	2 25	2 25	9 20				
Ar WASHINGTON (RF&P)	Lv	5 40	10 50	6 50	6 40				
Ar									

EXPLANATION OF CHARACTERS

- A** Stops to receive and discharge passengers for and from Richmond and beyond; also for and from Atlanta and beyond.
- a** Stops to receive and discharge passengers for and from Raleigh, Birmingham and beyond.
- aa** Stops on signal to receive or discharge revenue passengers.
- B** Stops to discharge passengers from Birmingham and beyond.
- b** On Sunday arrive New Haven 4:35 P.M.; Providence 7:01 P.M.; Boston 8:00 P.M. On Friday arrives Providence 7:09 P.M.; Boston 8:05 P.M.
- bb** Stops only on advance notice to Ticket Agent to receive or to Conductor to discharge passengers for and from points south of Richmond where trains are scheduled to stop.
- C** Stops to receive and discharge passengers for and from West Palm Beach and Miami; also for and from Jacksonville and beyond.
- c** Stops only to receive and discharge passengers for and from points south of Washington.
- cc** Stops to receive passengers only.
- D** Stops to discharge passengers from Richmond and beyond and to receive passengers for Jacksonville and beyond.
- d** Stops only to receive or discharge passengers for or from points south of Richmond.
- dd** Stops to discharge passengers only.
- E** Stops to receive and discharge passengers for and from Norlina, Jacksonville and beyond.
- e** Sleeper open 10:00 P.M.
- ee** Stops to receive and discharge passengers for and from Dade City, Plant City, Tampa and points south; also for and from Wildwood, Ocala, Jacksonville and points north.
- F** Stops to receive and discharge passengers for and from Washington and beyond.
- f** Stops to discharge passengers on notice to Conductor; to receive passengers on signal or on notice to Ticket Agent.
- ff** Stops to discharge passengers from Richmond and beyond and to receive for Wildwood and beyond where train stops.
- G** Stops to discharge passengers from West Savannah and beyond and to receive for West Palm Beach and Miami.
- g** Stops to receive and discharge passengers for and from Columbia and beyond.
- gg** Stops to discharge passengers from points beyond Wildwood and to receive for Petersburg and beyond where train stops.
- H** Stops to receive and discharge passengers for and from Petersburg and beyond; also for and from points beyond Wildwood where train stops.
- h** Stops to receive and discharge passengers for and from Atlanta, Birmingham and beyond.
- hh** Stops to receive passengers for Tampa and beyond; also to discharge passengers from north of Jacksonville
- i** Sleeper parked until 7:00 A.M.
- ii** Stops to receive and discharge passengers for and from points north of Plant City.
- J** Stops on signal to receive or discharge revenue passengers for or from points south of Richmond.
- j** Stops to receive and discharge passengers for and from Thalmann and beyond.
- jj** Stops to discharge passengers from Wildwood and beyond.
- K** Stops to discharge passengers from Savannah and beyond and to receive for Ocala, Tallahassee and beyond.
- k** Stops to receive and discharge passengers for and from Richmond, Savannah and beyond.
- kk** Stops to discharge passengers from Petersburg and beyond, and to receive passengers for points beyond Wildwood where train stops.
- L** Stops to discharge passengers from Petersburg and beyond, and to receive passengers for Wildwood and beyond where train stops.
- ll** Stops to receive and discharge passengers for and from West Savannah and beyond.
- M** Stops to receive and discharge passengers for and from Savannah and beyond.
- m** Stops to receive and discharge passengers for and from Washington, Savannah, Athens and beyond; also for and from Portsmouth line.
- N** Stops to receive and discharge passengers for and from Monroe and beyond.
- n** Stops to receive and discharge passengers for and from Raleigh and beyond; also for and from Atlanta and beyond.
- oo** Stops to discharge passengers from north of Jacksonville and to receive passengers for Tampa and beyond.
- P** Stops to receive and discharge passengers for and from Petersburg and beyond; also to and from West Palm Beach and Miami.
- p** Stops to discharge passengers from Raleigh and beyond and to receive passengers for Columbia, Monroe and beyond.
- pp** Reserved seat coach streamliner.
- Q** Stops to receive and discharge passengers for and from Jacksonville and beyond.
- q** Stops to receive and discharge passengers for and from Washington Savannah and beyond.
- qq** Stops to discharge passengers from Monroe and points west.
- R** Stops to receive passengers for points south of Wildwood at which train stops.
- r** Change trains at New Haven.
- r** Via S.A.L. bus between Yulee and Fernandina.
- S** Stops to discharge passengers holding tickets from points north of Jacksonville.
- s** Stops to discharge passengers from Raleigh and beyond and to receive for Norlina and beyond.
- ss** Stops on Saturdays and Sundays only to receive passengers for Birmingham
- T** Stops to receive and discharge passengers for and from points at which train is scheduled to stop.

- t** Stops to receive and discharge passengers for and from Raleigh, Hamlet and beyond.
- tt** Operates to or from Grand Central Station, New York.
- U** Stops to receive and discharge passengers for and from Petersburg and beyond.
- u** Stops to discharge passengers from Petersburg, Richmond and beyond, also from stations on Portsmouth line, and to receive for Raleigh and beyond.
- uu** Stops to receive passengers for points east of Monroe.
- V** The Portsmouth-Atlanta coach and Portsmouth-Atlanta sleeping car, handled on "The Silver Comet" west of Hamlet, are handled between Norlina and Hamlet on "The Sunland," Nos. 7-8, serving intermediate stations Henderson, Wake Forest, Sanford, Southern Pines and Abardeen, which are not stops for the "Silver Comet" to receive and discharge passengers for and from points west of Hamlet. These cars also serve Raleigh.
- v** Sleeper may be occupied until 7:30 A.M.
- vv** Stops to receive and discharge passengers for and from points beyond Wildwood where train stops.
- W** Stops to discharge passengers from Tampa and points south and from points on Miami-Wildwood line.
- w** Tamiami Trail Tours Bus—S.A.L. Railroad tickets honored.
- ww** Stops to receive and discharge passengers for and from Columbia, Savannah and beyond.
- X** Stops to receive and discharge passengers for and from West Palm Beach and Miami.
- x** Stops to receive and discharge passengers for and from Savannah, Jacksonville and beyond.
- xx** Stops to receive and discharge passengers for and from Richmond and beyond.
- Y** Stops to discharge passengers from Tampa and Plant City, and to receive for Jacksonville and beyond.
- y** Stops on signal to discharge revenue passengers.
- yy** Stops to receive and discharge passengers for and from Raleigh and beyond.
- Z** Stops to receive and discharge passengers for and from Jacksonville and beyond; also to receive and discharge passengers for and from points between West Lake Wales and St. Petersburg.
- z** Stops to discharge passengers from north of Hamlet and to receive for Columbia and beyond.
- zz** Stops to discharge passengers from Columbia and beyond and to receive passengers for Hamlet and beyond.
- ① Stops to receive and discharge passengers for and from Jacksonville and beyond and from points served by the "Gulf Wind," also for and from Waldo and Ocala.
- ② Stops to receive and discharge passengers for and from Jacksonville and beyond and from points served by the "Gulf Wind," also for and from points between St. Petersburg and West Lake Wales, also for and from West Palm Beach and Miami.
- ③ Stops to receive and discharge passengers for and from Petersburg and beyond; for and from points served by the "Gulf Wind"; for and from points between St. Petersburg and West Lake Wales and for and from West Palm Beach and Miami.
- ④ Stops to receive and discharge passengers for and from Petersburg and beyond; for and from points served by the "Gulf Wind," and for and from points between St. Petersburg and West Lake Wales.
- ⑤ Stops to receive and discharge passengers for and from Jacksonville and beyond and from points served by the "Gulf Wind"; for and from points between St. Petersburg and West Lake Wales, also for and from Waldo and Ocala.
- ⑥ Stops to receive and discharge passengers for and from Jacksonville and beyond and from points served by the "Gulf Wind"; also for and from points between St. Petersburg and West Lake Wales.
- ⑦ Stops to discharge passengers from Jacksonville and beyond and from points served by the "Gulf Wind."
- ⑧ The Sunset Limited, Extra Fare Streamlined Train — Advance Reservations Necessary.
- ⑨ On Sundays and Dec. 25 and Jan. 1, leaves New York 4:02 A.M., arrives Washington 8:20 A.M.
- ⑩ Special service charge — Advance Reservations Necessary.
- ⑪ On Sunday leaves Boston 7:30 A.M., Providence 8:18 A.M., New Haven 10:28 A.M. and arrives New York 11:50 A.M.
- ⑫ Connection made via Washington.
- ▼ Stops to receive and discharge passengers for and from Jacksonville, Tallahassee and beyond.
- Limited Bus—Seats reserved without extra charge
- † Daily except Sunday.
- ‡ Stops to receive and discharge passengers for and from Petersburg and beyond; also stops to receive and discharge passengers for and from points at which this train is regularly scheduled to stop; also to and from Winter Haven, Fort Lauderdale and Hollywood; also for and from points served by the "Gulf Wind."
- ☒ Stops to discharge passengers from Jacksonville and beyond and from points served by the "Gulf Wind"; also to receive passengers for West Palm Beach and Miami; also to discharge passengers from points between St. Petersburg and West Lake Wales.
- § Sleeper open for 9:00 P.M. occupancy.
- ¶ Florida Greyhound Lines Bus—S.A.L. Railroad tickets honored.
- ⊘ Stops to receive passengers for Jacksonville and beyond and to discharge passengers from West Palm Beach and Miami; also to receive passengers for points between West Lake Wales and St. Petersburg.
- ‡ Stops to receive passengers from the "Gulf Wind" destined to points at which train is scheduled to make regular or conditional stops.
- ⌘ Sleeper open 9:30 P.M.
- # Approximate time.

GENERAL INFORMATION

TICKET OFFICES

Ticket offices at all principal stations are open thirty minutes before departure of trains, and passengers are requested to purchase tickets before boarding trains. This will result in a saving of expense, as in many cases, the cash fares charged by Conductors on trains are higher than through fares charged by Ticket Agents. Passengers should always procure tickets at regular railroad ticket offices, as there are numerous expired and illegal tickets in the hands of unauthorized parties for sale, which, when presented, are rejected by Conductors.

TRAIN STOPS

Through trains will stop at stations where they are scheduled to stop; passengers boarding through trains and holding tickets to local stations will transfer to local trains at most convenient point.

BAGGAGE

Baggage Service.—Baggage may be checked for transportation, subject to tariff regulations. Generally 150 pounds are checked free on full fare tickets and 75 pounds on half fare tickets. No single piece of baggage exceeding 300 pounds in weight or 72 inches in greatest dimension, or single shipment exceeding \$2,500.00 in value will be checked. Free allowance subject to tariff stipulations as to contents, weight, value, size, and type of container.

Baggage Defined.—Wearing apparel, toilet articles, except liquids, and similar personal effects in actual use and necessary for the purpose of the journey, enclosed in trunks, suit cases, or other containers sufficiently durable to stand rapid handling. Money, jewelry, silverware, watches, negotiable papers, and like valuables, fragile or perishable articles, typewriters (except samples), radios or other household goods must not be enclosed in baggage to be checked.

Bicycles (not motorcycles), baby carriages, club paraphernalia and other property specified in tariff are transported in baggage cars and included in weight and value of passenger's baggage.

Dogs and other small household pets are transported in baggage cars, subject to tariff regulations. When carried in baskets or containers, they may be taken by purchaser of compartments or other Pullman room accommodations into the rooms they occupy.

Forwarding of Baggage.—Passengers are urged to check baggage in advance so that it may be forwarded on a preceding train. Every effort will be made to facilitate the handling of baggage, but the railroad cannot guarantee the forwarding of baggage on same train with owner; nor can time of arrival at destination be guaranteed.

Check Baggage Direct.—Passengers are urged to check their baggage through to house address, hotel, steamship dock, etc., at destination, thus insuring prompt delivery and avoiding necessity for any further attention on their part. Reliable transfer companies perform the service at reasonable rates, which are collected on delivery.

Baggage Liability Limited.—Value in excess of free allowance must be declared and paid for at time of checking.

Insure Your Baggage and Personal Effects.—A short-term policy of the St. Paul Fire & Marine Insurance Company, insuring all baggage taken on a trip, whether worn, carried or checked, may be purchased at principal offices of the Seaboard Air Line Railroad. The coverage is liberal and the rates are low. Minimum premium 25¢. Ask Ticket Agents for particulars.

Storage.—A charge is made for storage of baggage left at railroad stations longer than the free time limit.

Checking baggage to Norfolk, Va. For the accommodation of passengers destined to Norfolk, but who hold tickets to Portsmouth, baggage will be checked through upon request. The baggage room in Norfolk, Va., for delivery of inbound baggage only is located at 42 Fayette St., tel. 29031. For outbound passengers, Price Transfer Co. will also pick up baggage at hotels and residences in Norfolk for delivery to Seaboard Station in Portsmouth at same rate charged for handling to railroad stations in Norfolk.

LOST ARTICLES

When articles are lost or left on trains, or left in stations, owner should apply at once to Agent at station where he leaves train, or communicate with W. H. Grav, General Baggage Agent, Seaboard Air Line Railroad Norfolk 10, Va.

Passengers should give full description of the property, together with date of loss, train number, whether left in coach or sleeping car, etc.

We will render every assistance to endeavor to recover lost property, but no responsibility assumed for unchecked articles left in stations or cars.

TICKETS—FARES

Children under five years of age, in charge of a competent person, are carried free. Those five years of age and under twelve are required to pay half fare. Those twelve years of age and over are required to pay full fare.

Except as shown in note "C" under Ticket Requirements on next page.

Adjustment of differences. In the event of any disagreement with a Conductor relative to tickets or fares, passengers should pay Conductor's claim, taking his receipt and refer the case, for adjustment, to J. D. Makinson, Passenger Traffic Manager, Norfolk 10, Va. Conductors have no discretionary power in such matters and are governed by rules which they are not authorized to change.

Redemption of tickets. This company will fully protect original purchasers from loss in cases where for satisfactory reasons, tickets are not used; refunding the difference between the amount paid and the charge for the portion used. Forward, with full particulars by registered letter, to J. D. Makinson, Passenger Traffic Manager, Norfolk 10, Va.

REGULATIONS GOVERNING REDEMPTION OF SLEEPING CAR TICKETS

Ticket agents are authorized to refund the purchase price of unused sleeping car tickets only:

1. When the space covered by the ticket is released in advance in accordance with tariff requirements.
2. When the late arrival of another train has caused the passenger to miss connections.
3. When, for any reason, the Pullman space covered by the ticket is unavailable.

In emergencies, Ticket Agents will accept release of space up to train time, or even later, but the request for refund of the purchase price of the ticket covering it must be made direct to The Pullman Company, Chicago 3, Illinois, and refund will be made only if the space covered by the ticket has been resold.

This railroad will not be responsible for errors in time tables, inconveniences or damages resulting from delay to trains, or failure to make connections.

All schedules and equipment shown herein are subject to change without notice.

PULLMAN RATES

TABLE OF UPPER BERTH, DRAWING ROOM, COMPARTMENT, BED ROOM AND ROOMETTE RATES

(15% U. S. Tax Not Included.)
SUBJECT TO CHANGE WITHOUT NOTICE.

Where Lower Berth Rate is	Upper Berth	RATE WILL BE						
		FOR ONE PASSENGER				FOR TWO OR MORE PASSENGERS		
		Drawing Room	Compartment	Bed Room	Roomette	Drawing Room	Compartment	Bed Room
\$ 5.00	\$ 3.80	\$15.05	\$11.30	\$ 9.50	\$ 7.00	\$19.00	\$14.45	\$11.05
5.50	4.15	16.55	12.40	10.45	7.65	20.90	15.45	12.15
5.80	4.45	17.40	13.05	11.05	8.20	22.10	16.25	12.75
6.15	4.70	18.45	13.85	11.65	8.65	23.30	17.70	13.50
6.55	4.95	19.65	14.80	12.50	9.15	25.00	18.40	14.45
6.90	5.30	20.70	15.55	13.10	9.65	26.20	19.85	15.20
7.20	5.60	21.55	16.15	13.70	10.10	27.40	20.55	15.80
7.60	5.75	22.75	17.10	14.45	10.60	28.90	21.15	16.70
8.00	6.05	24.00	18.00	15.20	11.10	30.40	22.55	17.60
8.30	6.25	24.85	18.65	15.75	11.55	31.50	23.25	18.25
8.65	6.55	25.90	19.45	16.40	12.00	32.80	24.60	19.00
8.90	6.80	26.75	20.05	16.95	12.50	33.90	25.20	19.60
9.30	7.00	27.95	21.00	17.70	12.95	35.40	25.90	20.45
9.60	7.30	28.80	21.60	18.25	13.50	36.50	27.25	21.10
9.95	7.55	29.85	22.35	18.90	14.00	37.80	27.85	21.90
10.25	7.80	30.70	23.05	19.45	14.90	39.90	29.20	22.55
10.65	8.05	31.90	23.90	20.25	14.90	40.50	29.95	23.40
10.95	8.30	32.80	24.60	20.75	15.35	41.50	30.55	24.05
11.25	8.55	33.80	25.35	21.40	15.75	42.80	31.90	24.80
11.55	8.80	34.65	26.00	21.95	16.25	43.90	32.55	25.40
11.95	9.10	35.90	26.90	22.70	16.70	45.40	33.85	26.35
12.25	9.30	36.75	27.65	23.50	17.10	46.60	34.45	26.95
12.60	9.55	37.80	28.35	23.90	17.60	47.80	35.10	27.70
12.80	9.85	38.45	28.85	24.40	18.00	48.80	36.40	28.25
13.25	10.00	39.70	29.80	25.15	18.45	50.30	36.95	29.10
13.50	10.30	40.55	30.40	25.70	18.90	51.40	38.30	29.75
13.80	10.50	41.40	31.05	26.20	19.30	52.40	38.85	30.35
14.10	10.75	42.25	31.70	26.80	19.70	53.60	39.45	31.00
14.80	11.20	44.35	33.25	28.05	20.65	56.10	41.40	32.50
15.40	11.75	46.25	34.65	29.25	21.55	58.50	43.30	33.95
15.70	11.90	47.10	35.30	29.85	21.95	59.70	43.95	34.55
16.05	12.20	48.15	36.10	30.50	22.45	61.00	45.20	35.30
16.35	12.40	49.00	36.75	31.05	22.65	62.10	45.70	35.95
16.60	12.65	49.85	37.40	31.55	23.30	63.10	47.00	36.55

TICKET REQUIREMENTS

FOR EXCLUSIVE OCCUPANCY OF PULLMAN SPACE ON SAL RAILROAD

STANDARD SLEEPING CARS	Minimum Number of Adult Railroad Tickets valid for transportation in sleeping or parlor cars
BERTH (See Notes A & C).....	1
ROOMETTE (See Notes B & C).....	1
COMPARTMENT, BERTH SERVICE (See Notes B & C).....	1 1/2
COMPARTMENT, SEAT SERVICE (See Notes B & C).....	1 1/2
DRAWING ROOM, BERTH SERVICE (See Notes B & C).....	2
DRAWING ROOM, SEAT SERVICE (See Notes B & C).....	2
SINGLE OR DOUBLE BED ROOM (See Notes B & C).....	1

Exception: Between Washington, D. C., and Atlanta, Ga., Birmingham, Ala., Memphis, Tenn.; also between Atlanta, Ga., and Memphis, Tenn.; in connection with the Richmond, Fredericksburg & Potomac RR between Washington, D. C. and Richmond, Va. and the St. Louis, San Francisco Railway between Birmingham, Ala. and Memphis, Tenn., the minimum ticket requirement for compartment is 1-1/10 tickets for berth or seat service and 1 1/4 tickets for drawing room for berth or seat service.

Note A: For use of a berth or a seat by a child five (5) years of age or over and under twelve (12) years of age, one (1) child's half fare sleeping or parlor car passage ticket only will be required.

Note B: The same minimum requirement applies for the use of this space by one or more children under twelve (12) years of age.

Note C: A collection of one-half (1/2) adult fare for transportation in sleeping or parlor cars, in addition to sleeping or parlor car space charge, will be made for each berth or seat in sleeping car or seat in parlor car occupied exclusively by one or more children under five years of age (only one half fare collection will be made when berth or seat is occupied by two or more children of such age) accompanied by parent or guardian, except that such charge will not be made when such berth or seat in sleeping car is in the same berth, in the same section when lower berth only is prepared for overnight occupancy, the same compartment, drawing room, bedroom or roomette as that occupied by parent or guardian. The charge for exclusive use of such space by an adult will apply for both adult and child under five years of age.

RAIL AND PULLMAN FARES FROM PRINCIPAL POINTS ON S. A. L. RAILROAD

SUBJECT TO CHANGE WITHOUT NOTICE

15% U. S. Tax Not Included	ONE-WAY		ROUND-TRIP 6 Months Limit		Pullman Lower Berth (See Note)	15% U. S. Tax Not Included	ONE-WAY		ROUND-TRIP 6 Months Limit		Pullman Lower Berth (See Note)	15% U. S. Tax Not Included	ONE-WAY		ROUND-TRIP 6 Months Limit		Pullman Lower Berth (See Note)		
	*In Pullmans	In Coaches	*In Pullmans	In Coaches			*In Pullmans	In Coaches	*In Pullmans	In Coaches			*In Pullmans	In Coaches	*In Pullmans	In Coaches		*In Pullmans	In Coaches
ATLANTA, GA. to						FT. LAUDERDALE, FLA. to						SARASOTA, FLA. to							
Baltimore, Md.	\$26.32	\$18.90	\$47.76	\$34.30	\$ 7.60	Portsmouth, Va.	\$39.15	\$27.08	\$70.50	\$48.75	\$10.95	Baltimore, Md.	\$41.77	\$29.08	\$75.56	\$52.65	\$12.25		
Birmingham, Ala.	8.41	4.59	11.55	8.30	5.00	Raleigh, N. C.	33.06	22.73	59.55	40.95	9.60	*Boston, Mass.	61.34	43.96	114.70	82.41	15.70		
*Boston, Mass.	45.89	33.78	86.90	64.08	11.95	Richmond, Va.	39.08	27.04	70.35	49.70	10.65	Columbia, S. C.	21.69	14.62	39.05	26.38	7.60		
Memphis, Tenn.	15.28	10.96	26.35	19.75	5.00	Savannah, Ga.	19.77	13.24	35.60	23.85	6.15	New York, N. Y.	50.09	35.31	92.20	65.11	13.80		
Monroe, N. C.	10.53	7.51	19.00	13.55	5.00	Washington, D. C.	43.57	30.25	78.45	64.45	11.95	Philadelphia, Pa.	46.15	32.28	84.12	59.05	12.80		
New York, N. Y.	34.64	25.13	64.40	46.78	9.60	JACKSONVILLE, FLA. to						Portsmouth, Va.	35.82	24.56	64.15	44.25	10.65		
Philadelphia, Pa.	30.60	22.10	56.32	40.70	8.65	Baltimore, Md.	32.15	22.21	58.28	40.25	8.90	Raleigh, N. C.	29.52	20.21	53.15	36.40	8.90		
Portsmouth, Va.	23.05	16.45	41.50	29.65	7.60	*Boston, Mass.	51.72	37.09	97.40	70.01	12.80	Richmond, Va.	35.55	24.52	64.00	44.15	10.65		
RALEIGH, N. C. to						Columbia, S. C.	12.07	7.76	21.75	14.00	5.00	Savannah, Ga.	16.24	10.73	29.25	19.35	6.15		
Richmond, Va.	20.92	14.94	37.70	26.90	6.55	New Orleans, La.	23.83	16.86	42.55	30.35	6.55	Washington, D. C.	40.04	27.73	72.10	49.95	11.95		
Washington, D. C.	24.59	17.55	44.30	31.60	7.60	New York, N. Y.	40.47	28.44	74.90	52.71	10.65	SAVANNAH, GA. to							
AVON PARK, FLA. to						Philadelphia, Pa.	36.43	25.41	66.82	46.65	10.25	Baltimore, Md.	25.53	18.36	46.31	33.35	7.60		
Baltimore, Md.	40.82	28.39	73.91	51.40	10.95	Portsmouth, Va.	25.89	17.69	46.80	31.85	7.60	*Boston, Mass.	46.10	33.24	85.45	63.11	11.55		
*Boston, Mass.	60.39	43.27	113.05	81.16	14.80	Raleigh, N. C.	19.90	13.33	35.85	24.00	6.15	Columbia, S. C.	6.46	3.91	9.85	7.05	1.30		
Columbia, S. C.	20.74	13.94	37.35	25.10	6.15	Richmond, Va.	25.93	17.64	46.70	31.80	7.60	Ft. Lauderdale, Fla.	19.77	13.24	35.60	23.85	6.15		
New York, N. Y.	49.14	34.62	90.55	63.86	12.60	Savannah, Ga.	6.61	3.85	11.90	6.95	5.00	Jacksonville, Fla.	6.61	3.85	11.90	6.95	1.30		
Philadelphia, Pa.	45.10	31.59	82.47	57.80	11.95	Washington, D. C.	30.42	20.66	54.80	37.55	8.65	Miami, Fla.	20.72	13.94	37.30	25.10	6.55		
Portsmouth, Va.	34.66	23.87	62.40	43.00	9.60	MIAMI, FLA. to						New York, N. Y.	33.85	24.59	62.95	45.81	8.90		
Raleigh, N. C.	28.57	19.51	51.45	35.15	8.00	Baltimore, Md.	46.26	32.29	83.66	58.40	12.60	Philadelphia, Pa.	29.81	21.56	54.87	39.75	8.65		
Richmond, Va.	34.60	23.83	62.30	42.90	9.60	*Boston, Mass.	65.83	47.17	122.80	88.16	16.35	Portsmouth, Va.	19.38	13.84	34.90	24.95	6.15		
Savannah, Ga.	15.28	10.03	27.55	18.10	5.00	Columbia, S. C.	26.18	17.47	47.15	32.15	8.30	Raleigh, N. C.	13.29	9.48	23.95	17.10	5.00		
Washington, D. C.	39.08	27.04	70.35	48.70	10.65	New York, N. Y.	54.58	38.52	100.30	70.86	13.80	Richmond, Va.	19.32	13.79	34.80	24.85	6.15		
BIRMINGHAM, ALA. to						Philadelphia, Pa.	50.54	35.49	92.22	64.80	13.25	St. Petersburg, Fla.	16.30	10.78	29.35	19.45	5.50		
Atlanta, Ga.	6.41	4.59	11.55	8.30	5.00	Portsmouth, Va.	40.11	27.78	72.20	50.05	11.55	Sarasota, Fla.	16.24	10.73	29.25	19.35	6.15		
Baltimore, Md.	31.90	22.88	57.81	41.50	8.90	Raleigh, N. C.	34.01	23.42	61.25	42.20	9.95	Tampa, Fla.	14.76	9.67	26.60	17.45	5.50		
*Boston, Mass.	49.30	35.95	92.45	67.48	12.80	Richmond, Va.	40.04	27.73	72.10	49.85	10.95	Washington, D. C.	23.80	17.01	42.85	30.65	7.60		
Monroe, N. C.	16.94	12.10	30.50	21.80	5.50	Savannah, Ga.	20.72	13.94	37.30	25.10	6.55	SEBRING, FLA. to							
New York, N. Y.	40.22	28.11	74.45	53.96	10.65	Washington, D. C.	44.53	30.94	80.20	55.70	11.95	Baltimore, Md.	41.07	28.58	74.36	51.75	10.95		
Philadelphia, Pa.	36.18	26.08	66.37	47.90	9.95	OCALA, FLA. to						*Boston, Mass.	60.64	43.48	113.50	81.51	14.80		
Portsmouth, Va.	29.46	21.03	53.05	37.90	8.65	Baltimore, Md.	36.06	25.01	65.26	45.30	10.25	Columbia, S. C.	20.99	14.12	37.80	25.45	6.15		
Raleigh, N. C.	22.72	16.23	40.90	29.25	6.55	*Boston, Mass.	55.63	39.69	104.40	75.09	14.10	New York, N. Y.	49.39	34.81	91.00	64.21	12.60		
Richmond, Va.	27.34	19.53	49.25	35.20	8.30	Columbia, S. C.	15.98	10.53	26.60	19.00	5.50	Philadelphia, Pa.	45.35	31.78	82.92	58.15	11.95		
Washington, D. C.	30.17	21.53	54.35	38.80	8.65	New York, N. Y.	44.38	31.24	61.90	57.76	11.95	Portsmouth, Va.	34.91	24.06	62.85	43.35	9.60		
BRADENTON, FLA. to						Philadelphia, Pa.	40.34	28.21	73.82	51.70	10.95	Raleigh, N. C.	26.82	19.70	51.90	35.50	8.30		
Baltimore, Md.	41.39	28.81	74.91	52.15	12.25	Portsmouth, Va.	29.91	20.49	53.85	36.90	8.65	Richmond, Va.	34.85	24.01	62.75	43.25	9.60		
*Boston, Mass.	60.96	43.69	114.05	81.91	15.70	Raleigh, N. C.	23.82	16.14	42.90	29.10	6.90	Savannah, Ga.	15.53	10.22	28.00	18.40	5.00		
Columbia, S. C.	21.31	14.34	38.40	25.85	7.60	Richmond, Va.	29.84	20.45	53.75	36.85	8.65	Washington, D. C.	39.34	27.23	70.85	49.05	10.65		
New York, N. Y.	49.71	35.04	91.55	64.61	13.80	Savannah, Ga.	10.53	6.66	19.00	12.00	5.00	TAMPA, FLA. to							
Philadelphia, Pa.	46.67	32.01	83.47	58.55	12.80	Washington, D. C.	34.33	23.66	61.80	42.60	9.95	Baltimore, Md.	40.30	28.03	72.91	50.75	11.55		
Portsmouth, Va.	35.23	24.29	63.45	43.75	10.65	RALEIGH, N. C. to						*Boston, Mass.	59.87	42.91	112.05	80.51	15.40		
Raleigh, N. C.	29.14	19.93	52.60	35.90	8.90	Atlanta, Ga.	16.30	11.64	29.35	21.00	5.00	Columbia, S. C.	20.22	13.57	36.40	24.45	6.55		
Richmond, Va.	35.17	24.24	63.35	43.65	10.65	Baltimore, Md.	12.32	8.91	22.56	16.35	5.00	New York, N. Y.	48.62	34.26	89.55	63.21	12.80		
Savannah, Ga.	15.85	10.45	28.55	18.85	6.15	*Boston, Mass.	31.89	23.79	61.70	46.11	8.30	Philadelphia, Pa.	44.58	31.23	81.47	57.15	12.25		
Washington, D. C.	39.66	27.46	71.40	49.45	11.95	Columbia, S. C.	7.83	5.59	14.10	10.10	5.00	Portsmouth, Va.	34.14	23.51	61.50	42.35	9.85		
CLEARWATER, FLA. to						Ft. Lauderdale, Fla.	33.06	22.73	59.55	40.95	9.60	Raleigh, N. C.	28.05	19.16	50.50	34.50	8.30		
Baltimore, Md.	41.13	28.64	74.41	51.85	11.55	Jacksonville, Fla.	19.90	13.33	35.85	24.00	6.15	Richmond, Va.	34.08	23.47	61.35	42.25	9.85		
*Boston, Mass.	60.70	43.52	113.55	81.61	15.40	Memphis, Tenn.	31.59	22.60	55.70	40.70	8.90	Savannah, Ga.	14.76	9.67	26.60	17.45	5.50		
Columbia, S. C.	21.05	14.19	37.90	25.55	6.55	Miami, Fla.	34.01	23.42	61.25	42.20	9.95	Washington, D. C.	38.57	26.68	69.45	48.05	10.95		
New York, N. Y.	49.45	34.87	91.05	64.31	12.80	New Orleans, La.	35.37	25.25	63.70	45.45	9.95	WEST LAKE WALKES, FLA. to							
Philadelphia, Pa.	45.41	31.84	82.97	58.25	12.25	New York, N. Y.	20.64	15.14	39.20	28.81	5.90	Baltimore, Md.	43.70	27.60	72.36	50.35	10.95		
Portsmouth, Va.	34.98	24.12	63.00	43.45	9.95	Philadelphia, Pa.	16.60	12.11	31.12	22.75	5.50	*Boston, Mass.	59.54	42.63	111.50	80.11	14.80		
Raleigh, N. C.	28.89	19.77	52.05	35.60	8.30	Portsmouth, Va.	6.74	4.81	12.15	8.70	5.10	Columbia, S. C.	19.69	13.35	35.85	24.05	6.15		
Richmond, Va.	34.91	24.08	62.85	43.35	9.95	Richmond, Va.	6.11	4.35	11.00	7.85	5.15	New York, N. Y.	48.29	34.03	89.00	62.81	12.60		
Savannah, Ga.	15.60	10.29	28.10	18.55	5.50	St. Petersburg, Fla.	29.69	20.25	53.30	36.50	8.30	Philadelphia, Pa.	44.25	31.00	80.92	56.75	11.95		
Washington, D. C.	39.40	27.29	70.95	49.15	10.95	Sarasota, Fla.	29.52	20.21	53.15	36.40	8.90	Portsmouth, Va.	33.81	23.29	60.90	41.95	9.60		
COLUMBIA, S. C. to						Savannah, Ga.	13.29	9.48	23.95	17.10	5.00	Raleigh, N. C.	27.72	18.93	49.90	34.10	8.00		
Baltimore, Md.	20.08	14.46	36.51	26.30	5.80	Tampa, Fla.	28.05	19.16	50.50	34.50	8.30	Richmond, Va.	33.75	23.24	60.75	41.86	9.60		
*Boston, Mass.	39.65	29.34	75.65	56.08	10.25	Washington, D. C.	10.59	7.56	19.10	13.65	5.00	Savannah, Ga.	14.43	9.45	26.00	17.05	5.00		
Ft. Lauderdale, Fla.	25.22	17.15	45.40	30.90	8.00	RICHMOND, VA. to						Washington, D. C.	38.24	26.48	68.85	47.65	10.65		
Jacksonville, Fla.	12.07	7.76	21.75	14.00	5.00	Atlanta, Ga.	20.92	14.94	37.70	26.90	6.55	WEST PALM BEACH, FLA. to							
Miami, Fla.	26.18	17.84	47.15	32.15	8.30	Birmingham, Ala.	27.34	19.53	49.25	35.20	8.30	Baltimore, Md.	43.70	30.46	79.01	55.10	11.95		
New York, N. Y.	28.40	20.69	53.15	38.76	8.00	Columbia, S. C.	13.86</												

SEABOARD AIR LINE RAILROAD COMPANY

TRAFFIC DEPARTMENT DIRECTORY

FREIGHT TRAFFIC DEPARTMENT

G. B. RICE, Vice-President, S. A. L. R. R. Bldg., Phone 47411, Norfolk 10, Va.
 R. T. ETHERIDGE, Assistant Vice-President
 W. J. HOCK, Assistant to Vice-President
 W. V. GRESHAM, Assistant to Vice-President
 WARREN T. WHITE, Assistant Vice-President, Industrial Development
 J. P. DERHAM, Jr., Assistant Vice-President, Solicitation and Service

SOLICITATION AND SERVICE

J. P. DERHAM, JR., Assistant Vice-President	47411	Norfolk 10, Va.
E. W. LONG, Freight Traffic Manager	47411	Norfolk 10, Va.
J. K. MORGAN, Assistant Freight Traffic Manager	47411	Norfolk 10, Va.
H. G. WALKER, Assistant to Freight Traffic Manager	47411	Norfolk 10, Va.
J. P. ROBERTS, Perishable Diversion Agent	6-3321	Savannah, Ga.

EXPRESS

O. W. HALL, Express Traffic Manager	47411	Norfolk 10, Va.
-------------------------------------	-------	-----------------

INDUSTRIAL

WARREN T. WHITE, Assistant Vice-President	47411	Norfolk 10, Va.
C. M. HAZLEHURST, General Industrial Agent	47411	Norfolk 10, Va.
J. B. GREGORY, General Industrial Agent	47411	Norfolk 10, Va.
R. L. MANSFIELD, Assistant General Industrial Agent	47411	Norfolk 10, Va.
B. C. PARKINSON, Industrial Agent	47411	Norfolk 10, Va.
G. R. WARD, Industrial Agent	47411	Norfolk 10, Va.
R. N. HOSKINS, Industrial Forester	47411	Norfolk 10, Va.

PASSENGER TRAFFIC DEPARTMENT

C. E. BELL, Vice-President, S. A. L. R. R. Bldg., Phone 47411, Norfolk 10, Va.

PASSENGER

J. R. GETTY, General Passenger Traffic Manager	47411	Norfolk 10, Va.
J. D. MAKINSON, Passenger Traffic Manager (Rates and Commerce)	47411	Norfolk 10, Va.
E. F. WALDROP, Jr., Assistant to Gen. Pass Traffic Manager	47411	Norfolk 10, Va.
A. C. REA, Assistant General Passenger Agent	47411	Norfolk 10, Va.
W. H. GRAY, General Baggage Agent	47411	Norfolk 10, Va.

RATES

W. A. MARSHALL, Freight Traffic Manager	47411	Norfolk 10, Va.
W. W. WOLFORD, Assistant Freight Traffic Manager	47411	Norfolk 10, Va.
F. B. PHELPS, Assistant Freight Traffic Manager	47411	Norfolk 10, Va.
C. L. SENTER, Assistant to Freight Traffic Manager	47411	Norfolk 10, Va.
W. B. CULPEPER, General Freight Agent	47411	Norfolk 10, Va.
J. C. WARREN, General Freight Agent (Divisions)	47411	Norfolk 10, Va.
H. P. TOXEY, Assistant General Freight Agent	47411	Norfolk 10, Va.
J. A. KANE, Assistant General Freight Agent	47411	Norfolk 10, Va.
J. A. WILSON, Assistant General Freight Agent	47411	Norfolk 10, Va.
R. F. WOODY, Assistant General Freight Agent	47411	Norfolk 10, Va.
B. L. ODEND'HAL, JR., Assistant General Freight Agent	47411	Norfolk 10, Va.

AGRICULTURAL

J. N. McBRIDE, General Agricultural Agent	6-3321	Savannah, Ga.
F. P. ABBOTT, Assistant General Agricultural Agent	6-3321	Savannah, Ga.
R. S. DOWDELL, Assistant General Agricultural Agent	7194	Orlando, Fla.
H. H. BRANNEN, Assistant to General Agricultural Agent	6-3321	Savannah, Ga.

MAIL

ARTHUR E. BOWERS, Mail Traffic Manager	47411	Norfolk 10, Va.
--	-------	-----------------

DINING CAR

C. G. DOUGLASS, Gen. Supt. Dining Cars, 5th & T Sts., N. E., Hobart 2444, Washington 2, D. C.		
H. S. WHITED, Supt. Dining Cars, 5th & T Sts., N. E., Hobart 2444, Washington 2, D. C.		
C. V. FUNKE, Superintendent Dining Cars	45508	Jacksonville, Fla.
E. M. TUCKER, Superintendent Dining Cars and News Stands	212	Hamlet, N. C.

TRAFFIC DEPARTMENT REPRESENTATIVES

Telephone

ALBANY, GA.—P. O. Box 835
 F. E. HARRISON, ILL. Commercial Agent 2018-2019
 ATHENS, GA.—(City Ticket Office)
 414-415 Sou. Mutual Ins. Bldg.
 Information and Reservations 350
 H. W. HILL, Commercial Agent 350
 ATLANTA 3, GA.—(City Ticket Office)—62 Luckie St.
 Information and Reservations Walnut 5018
 22 Marietta Street, Room 1202
 H. E. FLASANTS, Gen. Pass. Agt. Walnut 2179
 N. A. CRUNK, Traveling Passenger Agent Walnut 2179
 J. T. BUBBEE, JR., Traveling Passenger Agent Walnut 2179
 22 Marietta Street, Room 1209
 B. J. KING, Asst. Frt. Traffic Mgr. Walnut 6534
 L. W. FINCHER, Div. Freight Agent Walnut 7046-47
 H. M. SAUNDERS, Agricultural Agent Walnut 6534
 AUGUSTA, GA.—523 So. Finance Bldg.
 B. D. JOINER, General Agent 24668
 BALTIMORE 2, MD.—5-7 So. Calvert St.
 Mercantile Trust Bldg.
 F. R. WIGGINS, JR., District Passenger Agent Lexington 4135
 J. F. WILLIAMS, General Agent Lexington 3920
 BELLE GLADE, FLA.—Room 3, Sanders Building
 H. O. CARLTON, General Agent 2530
 BIRMINGHAM 3, ALA.—(City Ticket Office)
 107 N. 20th St.
 Information and Reservations 4-5621
 M. VIN A. C. RENDLER, Gen. Pass. Agent 4-5621
 200 Seaboard Building
 W. A. REESE, Asst. Frt. Traf. Mgr. 4-7426
 G. S. WILLIAMS, Division Freight Agent 4-7426
 BOSTON 16, MASS.—2 Little Bldg.
 80 Boylston St.
 M. P. CLEAVES, New England Pass. Agt. Liberty 2-2634
 R. L. KNOX, New England Frt. Agt. Liberty 2-4700
 BRUNSWICK, GA.—Oglethorpe Hotel Bldg.
 J. H. MURPHY, Pass. and Ticket Agent 365
 BUFFALO, N. Y.—206 Lockawana Terminal
 DONALD E. POSTE, District Passenger Agent Wash 3736
 CHARLESTON 35, S. C.—22-26 Hasell St. Zone 35
 W. M. CURLEY, Asst. Gen. Frt. Agt. 3-0656, 2-2191
 E. C. SPEED, District Freight Agent
 CHARLOTTE 2, N. C.—228 East Fifth St.
 C. M. BONNER, Asst. Gen. Frt. & Pass. Agt. 8167
 R. S. LOCKHART, JR., District Freight Agent 8167
 J. D. FARRIS, Depot Ticket Agent 2-2840
 CHATTANOOGA 2, TENN.—1015 James Bldg.
 D. W. ANDERSON, General Agent 6-3758
 CHICAGO 3, ILL.—700 Bankers Building
 W. G. BYROM, Northwestern Pass. Agt. State 2-2185
 G. M. T. F. SCHREIBER, Gen. Western Agt. State 2-2194
 J. M. ENDERS, General Agent State 2-2194-5
 CINCINNATI 1, OHIO—2009-10 Carew Tower.
 C. E. BOISSIAU, JR., General Agent Main 5061
 CLEARWATER, FLA.—Seaboard Passenger Station
 R. B. NORTON, Depot Ticket Agent 3-2191
 CLEVELAND, OHIO—2037 E. 14th Street
 S. T. ALLEN, District Passenger Agent Superior 1-9239
 COLUMBIA 7, S. C.—(City Ticket Office) Arcade Bldg.
 Information and Reservations 2-8621-22
 J. L. CARTER, Asst. Gen. Pass. Agent 2-7153
 902 Gervais St., Zone 1
 E. Q. DAVIS, Asst. Gen. Frt. Agent 2-3655-56
 COLUMBUS, GA.—200-205 The Professional Building
 T. F. SHARPLESS, Asst. Gen. Frt. Agt. 3-217-8
 CORDELE, GA.—220 Seventh St., North
 T. C. MCDOWELL, District Freight Agent 748

Telephone

DETROIT 26, MICH.—1207 Lafayette Bldg.
 J. D. DAWSON, JR., General Agent Woodward 2-8404
 DURHAM, N. C.—S. A. L. Freight Station
 Foot Market Street
 MISS ELORIE LOWRY, City Passenger Agent 9-2366
 FOLK LAUDERDALE, FLA.—(City Ticket Office)
 333 South Andrews Ave.
 Information and Reservations 2-4751-52
 P. P. MEDFORD, Asst. Gen. Frt. & Pass. Agent 2-3519
 F. H. WILLIS, District Passenger Agent 2-4751-52
 FORT PIERCE, FLA.—Arcade Bldg.
 E. T. DAVIS, General Agent 22
 GAINESVILLE, FLA.—1120 E. University Ave., (P. O. Box 333)
 WILLIAM P. STONE, JR., Ticket Agent 3531
 F. E. WILSON, District Freight Agent 3071
 GREENVILLE, S. C.—34 South Academy St.
 H. S. WILLIAMS, District Freight Agent 2-3422
 HAMLET, N. C.—Seaboard Passenger Station
 J. CLAUDE EPTING, Agricultural Agent 212
 J. C. BENNETT, Agricultural Agent 212
 HARTSVILLE, S. C.—1403 Fourth Street
 E. B. BRIDGES, Commercial Agent 1100-1101
 HAVANA, CUBA—Centro Gaseo Bldg.
 DUSSAQ CO., LTD., S. A. Pass. Repr. & Tkt. Agts. A-6540
 HOPEWELL, VA.
 W. M. BETHRA, Agent 2233
 JACKSONVILLE 2, FLA.—(City Ticket Office)
 143 West Forsyth Street
 Information and Reservations 3-1791
 H. T. DENNING, General Passenger Agent 5-8871
 F. H. BRADLEY, Asst. Gen. Passenger Agent 5-8871
 54 S. Hogan Street, Zone 1
 E. H. BROWNE, Asst. Frt. Traffic Manager 5-8871
 J. L. HURSON, JR., Division Freight Agent 5-8871
 F. E. NIX, Agricultural Agent 5-8871
 KANSAS CITY 5, MO.—1204 Fairfax Bldg.
 P. R. MEDLAND, General Agent Victor 4747
 KEY WEST, FLA.—510 Southard Street
 SIMONS'S TOURS, Ticket Agents 298
 KINGSTON, JAMAICA, B. W. I.—Harbour & East Streets
 MARTIN'S TRAVEL SERVICE 5588-89
 LAKE WALES, FLA.—(City Ticket Office)
 Walsbilt Hotel
 Information and Reservations 2683
 H. W. HEPPELBER, District Freight & Passenger Agent 2683
 LOUISVILLE 2, KY.—320 Heyburn Building
 A. A. DUTZ, General Agent Jackson 3413
 MACON, GA.—603 Bankers Insurance Building
 W. W. MILLER, General Agent 28562
 MEMPHIS 3, TENN.—1035 Exchange Building
 N. C. OSBORN, General Agent 8-7067
 MIAMI BEACH, FLA.—1553 Washington Avenue
 MIAMI 32, FLA.—(City Ticket Office)—
 173 E. Flagler Street, P. O. Box 201
 Information and Reservations 82-6611
 W. J. FIGHT, General Passenger Agent 82-6611
 R. L. PROGNER, District Passenger Agent 82-6611
 1925 N. W. 7th Avenue, Zone 36
 C. J. MUNIER, Asst. Frt. Traffic Manager 3-5787-8
 WALLACE SMYER, District Freight Agent 3-5787-8
 MONTGOMERY 2, ALA.—119 Columbus St.
 M. F. FLINN, Commercial Agent 3-4479
 MONTREAL, QUE.—1240 Peel Street
 LEO B. TOBIN, District Passenger Agent, University 6-7811
 NASHVILLE 3, TENN.—830 Third National Bank Bldg.
 H. C. THOMPSON, General Agent 6-7427
 NASSAU, BAHAMAS—Shirley Street
 BAHAMAS TOURIST CO., LTD. 3181
 NEW ORLEANS 12, LA.—712 Hibernia Bank Bldg.
 W. D. CHAMBERS, S. W. F. & P. Agt. Raymond 7888

Telephone

NEW YORK 20, N. Y.—(City Ticket Office)
 12 W. 51st Street, Rockefeller Center
 Information and Reservations Circle 5-7380
 L. G. WEBER, General Passenger Agent Circle 5-7380
 V. T. BOATWRIGHT, JR., Asst. Gen. Pass. Agt. Circle 5-7380
 T. W. EDWARDS, JR., Asst. Gen. Pass. Agt. Circle 5-7380
 1478 Woolworth Bldg., Zone 7
 J. D. DAWSON, Gen. E. Frt. Agent Worth 2-1180
 EARL PATTERSON, Eastern Frt. Agent Worth 2-1180
 NORFOLK 10, VA.—(City Ticket Office)
 141 Granby Street
 Information and Reservations 2-5525
 PAUL W. HARRIS, Division Passenger Agent 2-5525
 100 Plume Street
 L. B. WOODY, Asst. General Freight Agent 2-2400
 S. V. DAME, District Freight Agent 2-2400
 Ocala, FLA.—13 Van Buren St.
 J. R. LAFFEY, Commercial Agent Marion 2-8702
 OKLAHOMA CITY, OKLA.—1426 N. W. 26th Street
 J. D. BREWET, General Agent 5-9525
 ORLANDO, FLA.—61 West Central Avenue
 J. F. RIVERS, Asst. General Freight Agent 7194
 P. B. LEGGETT, District Freight Agent 7194
 69 West Central Avenue
 T. A. FOSTER, Ticket Agent 23214
 PAHOKEE, FLA.—(See Belle Glade, Fla., address)
 E. P. HOLT, Commercial Agent 2791
 PALMETTO, FLA.—901-9th Ave.
 L. A. JONES, District Freight Agent 33-101
 F. M. CONNOR, Agricultural Agent 33-101
 PETERSBURG, VA.—Seaboard Passenger Station
 W. B. KIRKLAND, Ticket Agent 5072
 PHILADELPHIA 2, PA.—1428 S. Penn Square
 J. M. STUART, Asst. Gen. Pass. Agt. Rittenhouse 6-7154
 601 Finance Bldg.
 W. J. HETHERINGTON, Gen. Agt. Rittenhouse 6-8038-9
 PITTSBURGH 19, PA.—953-954 Union Trust Bldg.
 C. B. BARTON, Asst. Gen. Pass. Agt. Atlantic 1-1945
 H. E. SCHUNEMAN, General Agent Atlantic 1-1159
 PLANT CITY, FLA.—204 East Reynolds St.
 M. M. MORGAN, District Freight Agent 588
 W. M. HENRY, Agricultural Agent 588
 POMPANO BEACH, FLA.—17 State Farmer's Market
 Adm. Bldg.
 W. W. NICHOLS, Commercial Agent 9361
 RALEIGH, N. C.—(City Ticket Office)
 1524 Finance Bldg.
 Information and Reservations 3-2714
 H. E. HITCHINGS, Asst. General Passenger Agent 3-2714
 504 I. O. O. F. Temple
 G. C. POOLE, Asst. Freight Traffic Manager 7846
 C. C. ROBERTS, Asst. General Freight Agent 3-1661
 RICHMOND 18, VA.—(City Ticket Office)
 706 E. Grace Street
 Information and Reservations 3-0291
 G. L. BORDEN, Asst. General Passenger Agent 3-0291
 3rd Floor, Main Street Station
 C. V. ROY, Asst. General Freight Agent 7-0283
 E. N. QUAYLE, District Freight Agent 7-0283
 ROCHESTER 4, N. Y.—1221 Lincoln Alliance Bk. Bldg.
 S. VAN AUKEN, JR., General Agent Hamilton 1369
 ST. CROIX, V. I.—VIRGIN ISLANDS TOURS, INC. 517
 ST. LOUIS 13, MO.—1921-22 Railway Exchange Bldg.
 C. C. ROBERTS, Asst. General Freight Agent Main 1894
 ST. THOMAS, V. I.—VIRGIN ISLANDS TOURS, INC. Christiansted
 ST. PETERSBURG 1, FLA.—(City Ticket Office)
 415 First Avenue, North, Princess Martha Hotel
 Information and Reservations 7-5168-9
 E. R. MATTHEWS, Asst. Gen. Pass. Agent 7-5168-9
 L. M. MORGAN, District Freight Agent 7-4776
 SAN JUAN 15, PUERTO RICO—309 Recinto Sur St.
 PUERTO RICO TOURS, INC. 2-4058

(Continued on pages 49-50)

RAILROAD FARES — FROM NORTH TO SOUTH

Subject to Change Without Notice — 15% U. S. Tax Not Included
Lower berth rates shown in fares from Southern points on pages 45-46. Table of Pullman rates on page 44.

FROM	BOSTON, MASS. (Via Hell Gate Bridge)				CLEVELAND, OHIO (Via Washington, D. C.)				NEW YORK, N. Y.			
	ONE-WAY		ROUND-TRIP 6 Months Limit		ONE-WAY		ROUND-TRIP 6 Months Limit		ONE-WAY		ROUND-TRIP 6 Months Limit	
	*In Pullmans	In Coaches	*In Pullmans	In Coaches	*In Pullmans	In Coaches	*In Pullmans	In Coaches	*In Pullmans	In Coaches	*In Pullmans	In Coaches
ATHENS, GA.	\$43.58	\$32.13	\$ 82.75	\$ 61.11	\$38.65	\$28.31			\$32.33	\$23.48	\$60.25	\$43.81
ATLANTA, GA.	45.89	33.78	86.90	64.06	38.65	28.31			34.84	25.13	64.40	46.76
AVON PARK, FLA.	60.39	43.27	113.00	81.11	52.48	37.38	\$96.85	\$69.05	49.14	34.62	90.50	63.81
BIRMINGHAM, ALA.	49.30	35.95	92.61	67.64					40.22	29.11	74.45	53.96
BRADENTON, FLA.	60.96	43.69	114.00	81.91	53.00	37.51	98.75	69.45	49.71	35.04	91.50	64.61
CLEARWATER, FLA.	60.70	43.82	113.55	81.61	52.74	37.76	97.35	69.50	49.45	34.87	91.05	64.31
COLUMBIA, S. C.	39.65	29.34	75.65	56.06	34.43	25.11	64.20	46.70	28.40	20.69	53.15	38.76
FORT LAUDERDALE, FLA.	64.88	46.48	121.15	86.91	56.92	40.72	104.90	74.85	53.53	37.83	98.55	69.61
HOLLYWOOD, FLA.	65.14	46.66	121.55	87.21	57.18	40.90	105.40	75.15	53.89	38.01	99.05	69.91
JACKSONVILLE, FLA.	51.72	37.09	97.40	70.01	43.76	31.33	81.20	57.90	40.47	28.44	74.90	52.71
MIAMI, FLA.	65.83	47.17	122.80	88.16	57.87	41.41	106.60	76.05	54.58	38.52	100.30	70.86
MONROE, N. C.	35.88	26.63	68.85	51.21	33.87	24.91	63.50	44.40	24.63	17.98	46.35	33.91
OCALA, FLA.	55.63	39.89	104.40	75.06	47.67	34.13	88.20	62.95	44.38	31.24	81.90	57.76
RALEIGH, N. C.	31.89	23.79	61.70	46.11	29.88	22.07	56.35	39.45	20.64	15.14	39.20	28.81
ST. PETERSBURG, FLA.	61.41	44.02	114.80	82.51	53.29	37.84	98.35	69.40	50.16	35.37	92.30	65.21
SARASOTA, FLA.	61.34	43.96	114.75	82.41	53.38	38.03	97.20	69.40	50.09	35.31	92.25	65.11
SAVANNAH, GA.	45.10	33.24	85.45	63.11	39.89	29.02	74.05	53.75	33.85	24.59	62.95	45.61
SEBRING, FLA.	60.64	43.46	113.45	81.46	52.73	37.57	95.85	69.10	49.39	34.81	90.95	64.16
TALLAHASSEE, FLA.	54.23	39.74	101.90	74.81	50.12	35.86	92.65	66.10	42.98	31.09	79.40	57.51
TAMPA, FLA.	59.87	42.81	112.05	80.51	51.91	36.73	95.85	67.40	48.82	34.26	89.55	63.21
THALMANN, GA.	48.57	35.10	91.65	66.46	43.36	30.89	80.30	57.10	37.32	26.45	69.15	49.16
W. LAKE WALES, FLA.	59.54	42.69	111.50	80.06	51.58	36.74	94.80	67.65	48.29	34.04	89.00	62.76
W. PALM BEACH, FLA.	63.27	45.34	118.20	84.86	55.31	39.58	102.00	72.75	52.02	36.69	95.70	67.56
WINTER HAVEN, FLA.	59.15	42.41	110.75	79.56	51.19	36.53	94.10	67.15	47.90	33.76	88.25	62.26

FROM	PHILADELPHIA, PA.				PITTSBURGH, PA.				WASHINGTON, D. C.			
	ONE-WAY		ROUND-TRIP 6 Months Limit		ONE-WAY		ROUND-TRIP 6 Months Limit		ONE-WAY		ROUND-TRIP 6 Months Limit	
	*In Pullmans	In Coaches	*In Pullmans	In Coaches	*In Pullmans	In Coaches	*In Pullmans	In Coaches	*In Pullmans	In Coaches	*In Pullmans	In Coaches
ATHENS, GA.	\$28.29	\$20.45	\$52.17	\$37.75	\$35.82	\$25.95	\$66.55	\$48.00	22.28	\$15.90	\$40.15	\$28.65
ATLANTA, GA.	30.60	22.10	56.32	40.70	35.71	26.13	66.75	48.20	24.59	17.55	44.30	31.60
AVON PARK, FLA.	45.10	31.59	82.42	57.75	52.48	37.14	98.80	68.00	39.08	27.04	70.35	48.70
BIRMINGHAM, ALA.	36.18	26.08	66.37	47.90	42.12	30.72	78.30	56.50	30.17	21.53	54.35	38.80
BRADENTON, FLA.	45.67	32.01	83.42	58.55	53.00	37.51	97.80	68.80	39.66	27.46	71.40	49.45
CLEARWATER, FLA.	45.41	31.84	82.97	58.25	52.74	37.34	97.35	68.50	39.40	27.29	70.95	49.15
COLUMBIA, S. C.	24.36	17.66	45.07	32.70	31.69	23.16	59.45	42.85	18.35	13.11	33.05	23.60
FORT LAUDERDALE, FLA.	49.59	34.80	90.47	63.55	56.92	40.30	104.85	73.80	43.57	30.25	78.45	54.45
HOLLYWOOD, FLA.	49.85	34.98	90.97	63.85	57.18	40.48	105.35	74.10	43.84	30.43	78.95	54.80
JACKSONVILLE, FLA.	36.43	25.41	66.82	46.65	43.76	30.91	81.20	56.90	30.42	20.86	54.80	37.55
MIAMI, FLA.	50.54	35.49	92.22	64.80	57.87	40.99	106.60	75.05	44.53	30.94	80.20	55.70
MONROE, N. C.	20.59	14.95	38.27	27.85	27.92	20.45	52.65	38.10	14.58	10.40	26.25	18.75
OCALA, FLA.	40.34	28.21	73.82	51.70	47.67	33.71	88.20	61.95	34.33	23.66	61.80	42.60
RALEIGH, N. C.	16.60	12.11	31.12	22.75	23.93	17.61	45.50	33.00	10.59	7.55	19.10	13.65
ST. PETERSBURG, FLA.	46.12	32.34	84.22	59.15	53.29	37.84	98.35	69.40	40.11	27.79	72.20	50.05
SARASOTA, FLA.	46.05	32.28	84.17	59.05	53.38	38.03	98.55	69.30	40.04	27.73	72.10	49.95
SAVANNAH, GA.	29.81	21.56	54.87	39.75	37.14	27.06	69.25	50.00	23.80	17.01	42.85	30.65
SEBRING, FLA.	45.35	31.78	82.87	58.10	52.73	37.33	97.25	68.35	39.34	27.23	70.85	49.05
TALLAHASSEE, FLA.	38.94	28.06	71.32	51.45	43.86	31.96	81.40	58.70	32.93	23.51	59.30	42.35
TAMPA, FLA.	44.58	31.23	81.47	57.15	51.91	36.73	95.85	67.40	38.57	26.88	69.45	48.05
THALMANN, GA.	33.28	23.42	61.07	43.10	40.61	28.92	75.45	53.35	27.27	18.87	49.10	34.00
W. LAKE WALES, FLA.	44.25	31.01	80.92	56.70	51.58	36.50	95.30	66.95	38.24	26.46	68.85	47.65
W. PALM BEACH, FLA.	47.98	33.66	87.62	61.50	55.31	39.16	102.00	71.75	41.97	29.11	75.55	52.40
WINTER HAVEN, FLA.	43.86	30.73	80.17	56.20	51.19	36.29	94.55	66.45	37.85	26.18	68.15	47.15

*-Charge for space occupied additional.

TRAFFIC DEPARTMENT REPRESENTATIVES — (Cont.)

SARASOTA, FLA.—Main & Lemon Streets
JAMES C. DYKES, District Passenger Agent . Ringling 4-3201

SAVANNAH, GA.—(City Ticket Office)
7 E. Congress Street
Information and Reservations 3-7733, 6-3321
HUGH N. COLEBROOK, Division Pass. Agent. 3-7733, 6-3321

Union Station Building—435 West Broad St.
R. M. BARNETT, Asst. Freight Traffic Manager. 3-2431
E. H. SMART, Division Freight Agent. 3-2431
C. E. LLOYD, Agricultural Agent. 6-3321
R. R. BOYKIN, Agricultural Agent. 6-3321

TALLAHASSEE 1. FLA.—(Seaboard Passenger Station
Railroad Avenue
Information and Reservations 2-4904
C. E. WATERS, City Passenger Agent 2-4904
W. F. CANOVA, District Freight Agent. 2-4993

TAMPA 2. FLA.—(City Ticket Office)
Hillsboro Hotel
Information and Reservations. 2-8327
R. E. BLUMENSTIEL, Gen. Passenger Agent. 2-8001
J. F. THOMAS, JR., Asst. Gen. Passenger Agent. 2-8327

1006-10 Tampa Theater Bldg.
E. D. MAYS, Executive Gen. Agt.—Freight Traffic. 2-4931
A. M. BAKER, Asst. General Freight Agent. 2-4931
M. E. McRAE, Division Freight Agent. 2-4931

WASHINGTON 6, D. C.—(City Ticket Office)
1625 "K" St., N. W.
Information and Reservations National 0636
EDWARD PLACK, Gen. Pass. Agent. National 0636
R. H. GATKER, District Passenger Agent. National 0636
G. C. TATE, General Agent. Republic 8287

5th & T Streets, N. E.
C. G. DOTGLASS, Gen. Supt. Dining Cars. Hobart 2444

WEST PALM BEACH, FLA.—(City Ticket Office)
106 N. Narcissus Ave.
Information and Reservations. 4174
JOHN CALLAHAN, Division Passenger Agent. 4174

West 1st Street
G. S. WOODWARD, District Freight Agent. 8823
R. A. CARLTON, Agricultural Agent. 8823

WILMINGTON, N. C.—Room 1,
Carolina Savings & Loan Assn. Building
J. W. ROBERTS, Division Frt. and Pass. Agent. 21843-4

WINTER GARDEN, FLA.—T. & G. Freight Station
E. G. STEPHENS, District Freight Agent. 75

WINTER HAVEN, FLA.—(City Ticket Office)
Central Arcade
Information and Reservations. 2-6891
O. O. WALTERS, District Freight & Passenger Agent. 2-6891

FLORIDA

YEAR 'ROUND VACATIONLAND

Any time is playtime in Florida . . . Resorts throughout the State—inland, on the Atlantic or on the Gulf—welcome the visitor regardless of the season . . . Sunlit daytime hours are always suitable for beach sports, fishing, boating and other outdoor activities that make a vacation complete . . . All of the attractions and luxurious accommodations that give Florida its paramount position among winter resorts are available to vacationists throughout the year . . . VISIT FLORIDA NOW.

**SEABOARD SERVES
BOTH
FLORIDA COASTS**

Save TIME, MONEY, BOTHER
on your shipments
to CUBA

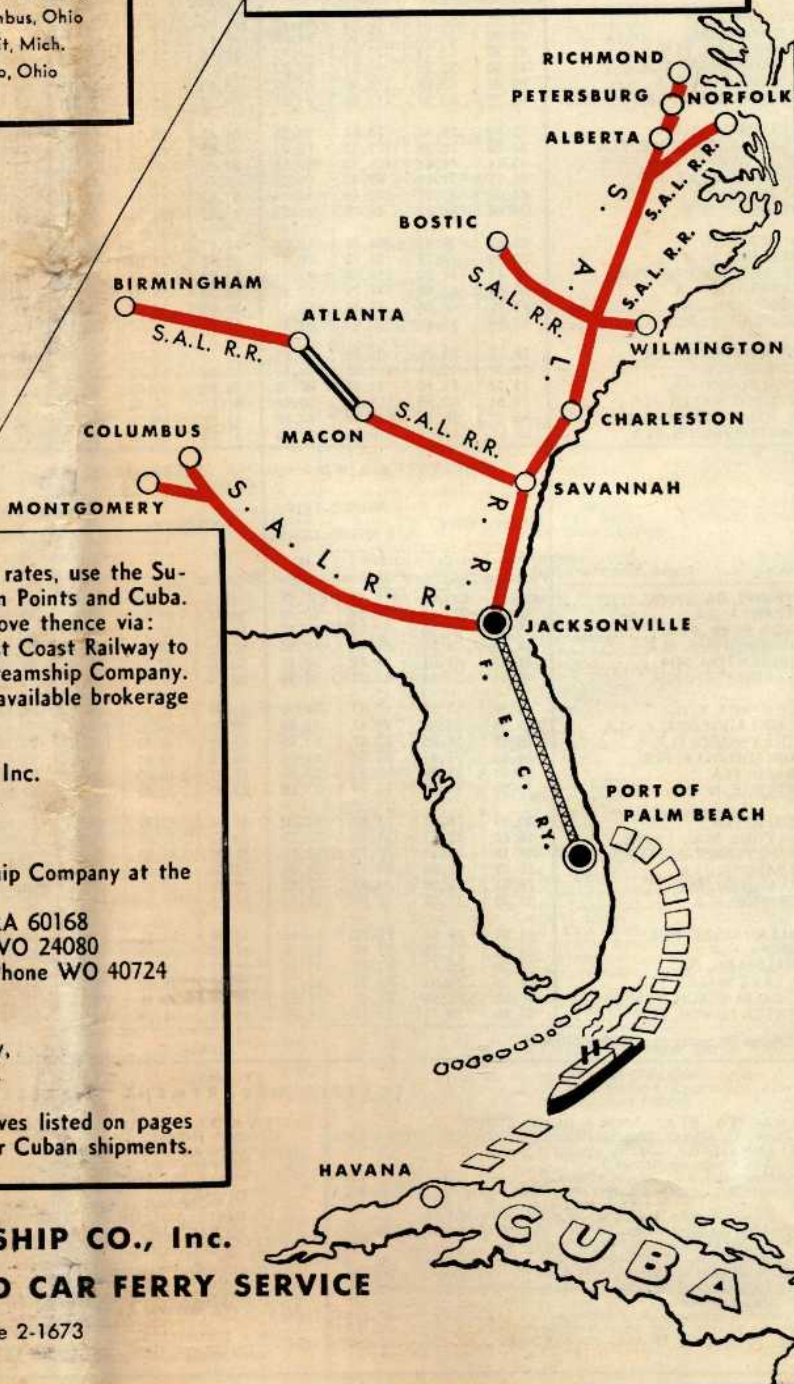
Albany, N. Y.
 Baltimore, Md.
 Boston, Mass.
 Buffalo, N. Y.

New York, N. Y.
 Philadelphia, Pa.
 Pittsburgh, Pa.
 Washington, D. C.
 Montreal, Que., Can.

Cleveland, Ohio
 Columbus, Ohio
 Detroit, Mich.
 Toledo, Ohio

Chicago, Ill.
 Denver, Colo.
 Kansas City, Mo.
 Memphis, Tenn.
 Minneapolis, Minn.
 Oklahoma City, Okla.
 Omaha, Neb.
 Pacific Coast
 St. Louis, Mo.
 St. Paul, Minn.

Chattanooga, Tenn.
 Cincinnati, Ohio
 Indianapolis, Ind.
 Louisville, Ky.
 Nashville, Tenn.



For regular, fast, safe and dependable service at lowest rates, use the Superior All-Rail Route between United States or Canadian Points and Cuba. Specify routing via rail lines to the junctions shown above thence via: Seaboard Air Line Railroad to Jacksonville, Florida East Coast Railway to the Port of Palm Beach, thence West India Fruit & Steamship Company. For bookings and information as to car ferry rates and available brokerage service consult:

W. L. Heath, Traffic Manager,
 West India Fruit & Steamship Company, Inc.
 P. O. Box 551, West Palm Beach, Fla.
 Telephone 2-1673

or

One of the offices of the West India Fruit and Steamship Company at the addresses shown below:

Chicago 2, Ill.—6 North Michigan Avenue—Phone RA 60168
 Detroit 26, Mich.—235 Lafayette Building—Phone WO 24080
 New York 8, N. Y.—30 Church Street, Room 402—Phone WO 40724

or

Dussaq and Toral, S. A.
 Havana Car Ferry Operating Company,
 Lonja del Comercio, Havana, Cuba.
 Telephones A-2101, A-3826

Seaboard Air Line Railroad freight traffic representatives listed on pages 47-50 will be glad to assist you in the handling of your Cuban shipments.

WEST INDIA FRUIT & STEAMSHIP CO., Inc.
FLORIDA-HAVANA RAILROAD CAR FERRY SERVICE

West Palm Beach, Florida, P. O. Box 551, Telephone 2-1673



Courtesy STARTS AT THE "HEAD END"

In the cab of the powerful Diesel locomotive the engineer's experienced hand moves the throttle ever so slightly . . . and the train is on its way with a start so smooth it's hardly noticed by the passengers.

This courteous salute from the "head end" is typical of the considerate treatment found everywhere on Seaboard trains. Engineers and firemen, conductors and trainmen . . .

Registered Nurses and Passenger Service Agents . . . dining and lounge car personnel . . . Pullman staff and other attendants — all contribute their cheerful, attentive efforts in a pleasant conspiracy to make traveling to and from the South really enjoyable. Their attitude says, "Welcome aboard!"

For courtesy, you know, is traditional on every Seaboard train.



SEABOARD
RAILROAD

THE ROUTE OF COURTEOUS SERVICE